

**\$2.23**  
+ HST =  
**\$2.50**

# The East Shore Mainstreet

## KOOTENAY LAKE BC

Serving the East Shore communities of Boswell, Gray Creek, Crawford Bay, Kootenay Bay and Riondel

**INSIDE:**  
News, Views,  
Reviews,  
Hot Topics,  
Current Events,  
Letters & Ideas

Fall Fair

This Month: 4

Museum Days: 5

Ashram's New

Initiatives: 4

School's Back: 7

Harrison Church

Celebrates 90: 9

Acting Group: 10,14

Brandon: 12



### Gray Creek Museum Days

images by Frances Roback, Steve White and Janet Schwieger

**Directly Above:** Long time summer resident Richard Westbury (L), shown here with Steve White, is a stellar teller of stories. On a quiet afternoon following the flurry of Museum Days, Richard recorded some of his memories with Steve and Frances for the Historical Society.

**Top Left:** Overall view of the Museum Days facing north at the Gray Creek Hall.

**Top Right:** Long-time sailors and racers Colin and Margaret Johnston enjoy the Gray Creek Regatta display.

**Bottom Right:** Empire Recreation Society members Kathy (R) and Liz Donnison, in turn-of-the-century costumes, visit the William Bayliss art display at Gray Creek Hall. Bayliss art was one of several feature displays at the Museum Days event in July, organized by the Gray Creek Historical Society. Photo by Steve White.



Mon-Thurs: 8-7 Fri-Sat: 8-8 Sun: 10-6  
Community grocery store  
Gasoline, Rural Liquor Agency,  
Post Office, Videos, Fishing Supplies,  
Campground/Marina  
Gray Creek, 227-9367  
[www.kootenaylakeview.com](http://www.kootenaylakeview.com)

**ESS** East Shore Internet Society  
EAST SHORE INTERNET SOCIETY  
**High-Speed Internet**

250-505-4089

info@esis.theeastshore.ca  
esis.theeastshore.ca

Central Kootenay Lake's community non-profit ISP

Return undeliverable items to:

The East Shore Mainstreet

Box 140, Crawford Bay, BC,

VOB 1E0

Agreement #:

40718537



# MS Issues

by Ingrid Baetzel, Editor

I go to Tipi Camp about every two years. This year, I wrote in the visitor's book, "Every time, I learn something new... thank you, thank you, thank you." Nothing fancy, but poignantly true. How many places do you go in a lifetime where every time you visit, you learn something new and fascinating about yourself or the world in which you live? How many places allow for deep, deep introspection while projecting your vision world-wide? I spent two nights at Tipi Camp in mid-August at a "Warrior/Goddess Medicine Wheel" retreat of sorts. Trust me, I had a hard time not laughing a bit at what I nervously anticipated as a new-age/ancient wisdom feminist love-in concept. I've been to a Medicine Wheel when I was a lot younger, but the message had long since worn off and I didn't really know what to expect. Would we be fashioning headdresses and bows and arrows? Would we be howling at the moon? Would we have to share too much? Too little?

In truth, I had a difficult time silencing the nattering voices in my head that scoffed and tittered at the language used in circle time. I got the giggles and I got impatient and angry. I tried to run away to the cliffs and the water to avoid doing work or looking too closely at anything. In the end, I got a lot more silent and was won over by love. Name it what you will, a group of women gathering to rejoice in each other and to talk about the things that are hurting and healing us is always a good thing. It is an important thing. Doing so without anything mind or ego altering and while looking intently into the eyes of someone who

is really seeing you is pain-stakingly awkward and humbling, but it's necessary. I felt like I went to this retreat to remember. I spent many hours watching the water and the stars, and felt like I re-introduced myself to me. My original plan in going to the camp was to just get away from the bustle and noise and planning of everyday. That worked in spades, as there was very little planning or bustle in the weekend, and yet some very important work was done.

I would like to thank Tipi Camp and all of its volunteers and coordinators who make it such a blissful, healing place and a heart-centered retreat from the everyday. Special thanks go to Sandra Bernier for her endless and tireless efforts and to the women who were there – you know who you are. (You really do, don't you?)



**SERVICES**  
505-2858

*Serving the East Shore Community Since 1999*

- Courier Service
- Shopping Service
- Security Service

**Will pick up and deliver DHL and Purolator packages, to and from Nelson.**

## Professional Photography Web & Graphic Design

Bat-hen Tiv (betty)  
betty778@gmail.com  
www.betty778.com  
250-225-3421  
250-225-3403



## LETTERS TO THE EDITOR

### HAZ MAT CONCERNS

Dear Community Members,

Did you know that hazardous materials travel the highway adjacent to our beautiful lake apparently with only a requirement to file a manifest with the BC Ministry of Environment giving details of the departure point, route and destination?

Did you know that on June 21 a tanker and trailer traveling southbound on highway #3A crashed through the concrete barrier on a left curve between Sirdar and Wynndel? A major fire ensued with severe burn damage and contamination of adjacent land below the highway. This accident followed a similar one involving a loaded semitrailer on the same curve a few weeks earlier, apparently carrying a piece of heavy equipment.

The recent tanker accident is of special concern since I am told that it was carrying used transformer oil, a hazardous waste product possibly containing PCB's. The fact that this highly toxic material traveled the highway adjacent to Kootenay Lake where there are many similar left curves where a southbound vehicle leaving the highway could end up in the lake is very disturbing from a pollution standpoint. Equally relevant and worthy of investigation is whether this shipment originated west of the lake and was accepted on the Kootenay Lake ferry with all the dangers that would entail. If it did, one has to wonder why this is permitted when there is an alternative route on highway #3 over Kootenay Pass through a relatively unpopulated area that eliminates both the danger of pollution of the lake and the danger to travelers on the popular tourist route to/from and on the Kootenay Lake ferry.

The broader issue of restricting certain commercial types of non-local through traffic on #3A between Balfour and Creston in the interests of public safety and environmental protection of Kootenay Lake needs to be addressed, especially when there are clearly viable alternative routes on highway #3 & #6 over Kootenay Pass. For non-hazardous cargoes a seasonal restriction

during the busy summer tourist season would be help improve safety, but nothing short of a complete ban on hazardous cargoes is essential to protect the lake year round. The precedent already exists for highway # 3B from its junction with highway #3 to Rossland, presumably because of safety issues involving the steep grades.

I urge concerned readers to write the BC Ministers of Public Safety and Environment as I have done.

*Colin D Johnston  
Gray Creek, BC*

#### Addresses are below for letter-writing:

**The Ministry of Public Safety  
(Honourable Michael de Jong) mailing address:**  
PO BOX 9290 STN PROV GOVT  
VICTORIA BC V8W 9J7  
Email: pssgwebfeedback@gov.bc.ca


**The Ministry of Environment's  
(Honourable Barry Penner) mailing address:**  
PO BOX 9339 STN PROV GOVT  
VICTORIA BC V8W 9M1  
E-mail: www.envmail@gov.bc.ca

### A KOOTENAY JIM

Dear Editor:

I'm sitting here in the middle of my "hole," a 20 by 40 foot hand-dug two and a half foot deep excavation I built my house over. Hauling a few tons of soil out with a wheelbarrow would be an everyday part of building your own home in the Kootenays. Your neighbours did it, you did it, part of the landscape.

Your salute last month to Jim Donald didn't mention his own very special part of the landscape. He designed, planned, framed and finished that beautiful home for his family on Riondel Road, all the while



## OFFICE DESK

Box 140, Crawford Bay, BC, V0B 1E0  
Editor: Ingrid Zaiss Baetzel (since 2002)  
Retail Distribution, Subscriptions, Advertising, Layout:  
Ingrid Zaiss Baetzel

(Subscriptions: \$40/year within Canada,  
\$50 to the US, and \$75 Internationally)

Phone: 250.227.9246  
Email: mainstreet@theeastshore.net

**Assistance:** Doreen Zaiss

**Writers:** Community

**Article? Letter? Etc?** Drop off at Gray Creek Store drop box,  
mail to Box 140, Crawford Bay, V0B 1E0  
**or Best Yet, Email to:** mainstreet@theeastshore.net

*The opinions expressed in this paper are not necessarily the opinions of staff or advertisers. We reserve the right to edit for clarity or brevity and acceptance of submissions is completely at the discretion of the editor.*

**Copies every issue: 1000**  
The East Shore Mainstreet is a monthly publication for the benefit of residents of the East Shore of Kootenay Lake, written by community volunteers. Send in October 2010 issue items by:

**Next Deadline:**  
**Weds, September 22, 2010**



## RDCK Area "A" Update

by Garry Jackman,  
Director, Area "A"

This month I want to start by talking trash and in particular about bears who have become regular visitors to the transfer stations.

**WASTE MANAGEMENT:** First, I would like to put the scope of the waste management services in perspective. Within the RDCK the 2010 budget to handle solid waste (garbage) and recycled materials is \$7.78 million. The budgets are split between east (\$1.76M), central (\$3.85M) and west (\$2.17M) sub-regions. We in Area A (Wynndel and the East Shore) belong to the east sub-region along with our neighbours in Creston and the surrounding rural Areas B (Ericson to Yahk) and C (West Creston and most the 'flats'). The budget is composed mainly of taxation and user fees. In Area A, whether you ever take a bag of garbage or recycle materials to the transfer stations or not, you are paying part of the \$217 thousand tax dollars which Area A puts in to help operate the east waste sub-region. That's about \$100 per 'full time' resident based on the census data, although we know we have many part time residents who also pay property taxes. Most of the rest of our share of costs is paid through the two bucks a bag we pay when we drop our garbage at the transfer stations.

So why mention the budget? First, even though the two dollars may seem to be a nuisance or trivial it does add up. It is also a way for year round residents

to pay a little more of their fair share than part time residents who are not here often to produce garbage but who get to pay the full amount on their property tax bill. Furthermore, in theory, it is a way to encourage us to reduce the amount of material we put in the trash bag (to save a buck) and increase the amount of material diverted from the landfill and put to use as recycled or reused material. Despite this attempt to have people pay closer to their fair share (user fee) **there is a chronic problem with people dumping garbage when the transfer stations are closed.** I am not sure if this is to save the two bucks, or because they were mistaken about the hours of operation and were unwilling to return during operating hours or whether they did not want to be inconvenienced by following a schedule for disposing of garbage. **If the motive was to save a couple of bucks and they own property locally then they will be paying more through taxation next year** because it costs a large premium to deal with illegally dumped garbage, whether it is spread along the road by bears and ravens or it is contaminating the recycle bins. Illegal dumping may also provide you with the opportunity to pay a fine, starting at a few hundred dollars, if your garbage contained personal information which identifies you. This time of year, in particular due to bear problems, the Conservation Officers will be looking to hand out tickets.

So let's consider the bears and their negative interactions with humans which is the crux of the problem. Once someone illegally leaves their garbage, at times with a toonie sitting neatly on top (before the ravens and bears get at the bag) they are creating a serious problem. Encounters with black (and now sometimes grizzly) bears have been common at the Crawford Bay transfer station and up until recently was a problem at the Boswell station. Perhaps the increased surveillance at Boswell has helped there. Once the bears are

used to feeding on garbage they are on the path to death by lead poisoning (bullets). Bears lingering at the transfer station are a threat to the operators and to residents using the site either during operating hours or worse yet when dropping off goods at the recycle bins in the quieter times of the day when the bears come looking for illegally dumped garbage bags. Encouraging bears to feed on our waste is also a step along the path of inviting them to our homes.

So I ask you, does anyone really save a buck when they leave their bag of garbage out along the road beside the transfer station or when they stuff their garbage into the recycle bins? Did they feel good about saving that buck? Because they cost all of the rest of us more to clean up the mess and to deal with the bears. The next cost which all of us will get to pay for will likely be surveillance cameras at the Crawford Bay site, so beware when you are dumping illegally. Perhaps you can casually drive past the transfer station and walk back a ways out of view of the camera to dump your bag. Watch out for the bear sitting off in the bushes when you are walking, because he knows what he is looking for and he may not wait for you to put the bag down.

**OTHER NEWS:** On a more positive note, I am attending a **transit planning meeting on August 25** where B.C. Transit will be going over their plans to improve service in the Central Kootenays. We recently received a briefing package which I expect will be made public after the meeting. We can benefit on the East Shore and in Wynndel by improvements to our neighbouring services. Hopefully the provincial mandate to raise service levels to enable doubling the ridership in the next few years will be met.

I also expect to see the preliminary reports from the consultant in September on a **sub-regional fire service model and on sub-regional governance.** One change that has already taken place which will help speed up the implementation of decisions made in the Creston Valley or along the East Shore is holding two RDCK Board meetings per month. In the prior model, one monthly committee meeting would be used to discuss items which are common to rural reps (like me) and urban reps (usually mayors) and a second meeting later in the month (of the same people) would be held to officially vote and act on the recommendations from the prior meeting. This resulted in a degree of duplication since the agreements made at the committee meeting could be changed prior to the official vote at the Board meeting. It also meant there was a considerable time lag to have local commission recommendations, such as from Rec 9, economic development or the Riondel Commission of Management, acted on. Now the time frame is twice a month there is also less pressure to try to complete and send in minutes from local meetings to make the Board agenda cutoff.

**The end of September brings the annual conference for B.C. municipalities.** Our Regional District will be stressing three main priorities in our discussions with provincial officials, those being **pre-hospital care improvements** (eg. high-acuity ambulance service), **water issues** (such as requirements for drinking water systems and protection of sources) and **economic development in general.** The latter is a two edged sword. Some have expressed economic development as meaning we are open for business, any business including larger scale mining. I exchanged some of my opinions with my urban colleagues at the last Board meeting suggesting that the large scale mining and logging which has benefits for urban centres can have more than a few detrimental impacts on the rural areas where the activity takes place. The Board's initial call for a push on economic development was amended to RESPONSIBLE AND APPROPRIATE economic development. We will see where this one leads.

*As always, contact me by calling 250-223-8463 or at [gjackman@kootenay.com](mailto:gjackman@kootenay.com).*

SEPTEMBER 2010 Mainstreet 3

## LETTERS TO THE EDITOR

resting with rural directors, while East Kootenay's voting power rests with urban directors.

There are several things directors can do to make Central Kootenay more sensitive to the residents and needs of the East Shore and Creston Valley. Why are the service delivery, decision making and economic benefits not in or at least closer to the area being served? In 1991 RDCK agreed to a Creston accountant keeping the accounts and paying the bills of the Creston & District Community Complex rather than the Nelson office. With today's sophisticated fiber optics and software, this concept should be expanded to include parks and recreation throughout RDCK, and Riondel's Commission of Management.

It seems the power of decision making by citizens has been slowly eroded especially in recreation. At the same time the power of the regional directors has increased. Rather than jumping to the East Kootenay, which makes decision making even more remote, why is there not work to empower or share power with local voters?

It is important to recognize superior service when provided. Kootenay Boundary Regional district has regional fire service. That means every property in their rural area has fire protection. (I understand RDCK has as much fire equipment available as the City of Vancouver and no part of Vancouver is without fire service.) What a great idea to have fire protection along the entire East Shore. East Kootenay Regional District does not charge average citizens for garbage handling. A good idea. Such service to people requires a service to community concept and cooperation.

Central Kootenay has had three Chief Executive Officers in the last 10 years. Many of their senior staff have retired and the province has down-loaded many extra responsibilities. This is a great opportunity for the 'stirrers of the pot' to take advantage. And they are.

Thank you,

Larry Brierley, Sirdar

### BURDEN'S CUT NEEDS ATTENTION

Dear Editor,

As you probably know, the public beaches along the East Shore of Kootenay Lake are few and far between. It is therefore very disappointing to watch a beautiful one deteriorate due to lack of maintenance and inappropriate use. Pebble Beach (also known as Burden's Cut or Garbage Can Beach) a few kilometers south of Lakeview Store is regularly used as an overnight campground even though it lacks any facilities necessary for that purpose. In recent years it seems to be considered a perfect retreat for music lovers after the local music event ends for the night. One count was forty-five vehicles parked on the highway. It is a lovely spot for day users to enjoy but not so good for overnighting.

Since the lake should be available for the local people and those who travel by, for a picnic and a cool swim, Pebble Beach should receive the care and attention required to preserve it.

Anne & Peter Hopher, Creston

### LAKEVIEW AND TIPI CAMP

To the Editor:

As most of you know, for the last twenty plus years The Lakeview in Gray Creek has been the staging location for embarking to The Tipi Camp.

In the spring, I enlisted the help of Johanne Bedard to facilitate the ongoing dialogue concerning the working relationship of The Tipi Camp and The Lakeview. The intent was to make a special effort to effectively work together.

Many thanks to the Tipi Camp directors, staff, volunteers, and guests for their efforts regarding sustainable use of The Lakeview property. In particular, logistics regarding vehicle parking and drive through were excellent. We hope their 2010 Tipi Camp sessions were successful and enjoyable for all.

Lois Wakelin, Gray Creek.

## Fall Fair Update

by Jeanne Lahnemann

The Fall Fair is being held on September 11 at the Crawford Bay Hall. This year we are having a special guest attend the fair so plan to be there at 1pm for the opening.

It looks like it was a good year in the garden and we hope you have earmarked lots of your vegetables, fruit and flowers to enter into the fair. That also includes the preserves that have already been put up. And don't forget all those craft projects and photos you have worked on since the last fair. It should be interesting to see what entries are there for the special categories especially GW1- the photo of person or persons with "wild" hairdo and or clothing. Hopefully you had some fun with this category. And students, we are looking forward to seeing what cover design you have for next year's fair- THE 100th FALL FAIR.

We will be accepting entries at the Crawford Bay Hall on September 10 from 3pm to 7pm. If you have lots of entries and want to get started early, advance entry tickets can be obtained by contacting Mike and Ivy Jeffery at 250-227-6807 or Jeanne Lahnemann at 250-227-9082. To save yourself some time, you can use address labels on your tickets instead of writing out your name and address.

On September 11, the judging will take place in the morning and the exhibits open for public viewing from 1pm until 5pm. We will be awarding prizes starting at 4:30pm followed by the auction of donated exhibits. Make sure you plan to attend the auction and see what you can get for very little money. The proceeds of the auction as well as the raffle provide funding for next year's event.

A tea and bake sale is also planned for the afternoon and weather permitting, it will be held in the yard outside the hall. Entertainment is being provided by

the Applesauce Fiddlers. Come out and enjoy their music.

To cut down on costs we have been asking exhibitors to recycle their ribbons. A box will be provided for you to drop off ribbons that you have accumulated.

If there is anyone who would be interested in getting involved at this year's fair, please contact Ivy Jeffery at 250-227-6807. We are always pleased to have new volunteers. As the old saying goes, many hands make light work. See you at the Fair!

**Next Deadline:  
September 22  
2010**



### SCHOOL DISTRICT NO. 8 (KOOTENAY LAKE)

#### SCHOOL OPENING – TUESDAY, SEPTEMBER 7, 2010

All schools will open at regular times on Tuesday, September 7, 2010. Kindergarten students **DO NOT** attend on this day. Please contact your school regarding Kindergarten schedules.

Some bus runs have changed, please check the District website [www.sd8.bc.ca](http://www.sd8.bc.ca) for all bus schedules or contact the Transportation Departments: **250-354-4871 (Nelson)** or **250-428-5329 (Creston)**

#### ALL END OF THE DAY BUS RUNS ON TUESDAY, SEPTEMBER 7<sup>th</sup> WILL COMMENCE 3 HOURS PRIOR TO REGULAR DISMISSAL TIME.

Wednesday, September 8, 2010 will be a full school day, with regular schedules in effect.

#### REGISTRATION OF STUDENTS WHO HAVE NOT PREVIOUSLY REGISTERED

Please register at your neighbourhood school on August 31 to September 3, 2010. Counselors will be available at secondary schools. Reports from the last school attended should be presented at registration.

Kindergarten Registration: A birth or baptismal certificate must be shown before a child can be registered.

#### HOME-SCHOOLED STUDENTS

As per the School Act and Regulations, parents/guardian(s) who choose to school their child(ren) at home are advised that they **MUST** register their child(ren) by September 30th with:

- any public school in the school district where the parent(s)/guardian(s) reside;
- the Distance Education School that serves that school district;
- an independent school anywhere in the province.

**Thank you,  
JEFF JONES, SUPERINTENDENT OF SCHOOLS**

## Ashram New Initiatives

by Alanda Greene

More than 100 people gathered at Yasodhara Ashram on August 12 and 13 to participate in the Annual General Meetings of the Ashram and its affiliated non-profit societies in Canada, the United States, Europe and Australia. Included were Ashram teachers from Montreal to Comox and from Trinidad to the Isle of Wight.

This global reach of Swami Radha's teachings continues to inform what the Kootenay-based Ashram Society is doing locally and is illustrated by four examples from the agenda that are of interest to the eastshore.

**Food Ecology:** Building out from its own extensive gardens and orchards, the Ashram is embarking on a 5-year "food flow" program to support local farmers and strengthen food security in the Kootenay Region. Headed by Paris Marshall Smith, a recent Masters graduate from UBC and an intern for Nelson-Creston MLA Michelle Mungall, the Ashram's goal is to act as a catalyst and role model for strengthening regional food systems.

**Yasodhara Heights Project:** Many people have noticed and enquired about the new road branching east off Riondel Road. This links to the Ashram's three new mountain retreat cabins, a "green building" initiative that began last year to meet the expanded



Swami Radhananda, President of the Ashram Society, opens the Annual General Meeting in August.

accommodation needs of the Society. Local contractors Allan Hughes and Sonni Greene have been heading the building and land design work, respectively, and were on hand at the AGM to host tours of the sites. One of the goals of this project is to lead by example, demonstrating practical, cost effective, ecologically responsible approaches to site development and building design and construction.

**Comprehensive Land Management:** Earlier this year, an Ashram guest, Dr. Cynthia Lane of Ecological Strategies Ltd., volunteered her time and expertise to produce a report to show how the Ashram can become a model for holistic land management in the context of emerging global and local issues. Her report covers the spiritual nature of the land, the intrinsic right to life of all beings, forest and soil issues, water scarcity and climate change. Her recommendations were unanimously accepted at the AGM and now form the foundation for a new, multi-year initiative for what is hoped will be a model for other land owners, public and private.

**People and Community:** Last spring, the Ashram Society offered to help the staff of Crawford Bay School as they embarked on a revitalizing approach to time-tabling and course offerings. Since then, Shandi Miller, a member of the Society, has worked with Dan

Rude, the school principal, and his staff to establish a Mentorship Program that would engage residents on the east shore in passing on skills and knowledge to students. This program was enthusiastically endorsed at the AGM, furthering the wholehearted support of the Society, with the immediate goal of seeing the program through to a successful launch in 2011. This community-school connection inspired many of those at the meetings as they explored ways to engage in similar activities when they return home.

- Planning a wedding?
- Holding a meeting?

Consider renting the  
**BOSWELL HALL**

Booking/info: Judy @ 250-223-8664

### Ted Wallace Open Studio & Art Sale

Ted has moved in to his new studio at the top of the driveway at 714 Riondel Road.

Everybody is welcome to drop by Saturday, Sept. 11 or other times by appointment.

All paintings in the studio will be sold at 30 to 70% off.

Payment plans are possible. Offers will be considered. (There is free stuff, too.)

# Revisiting Gray Creek's Museum Days

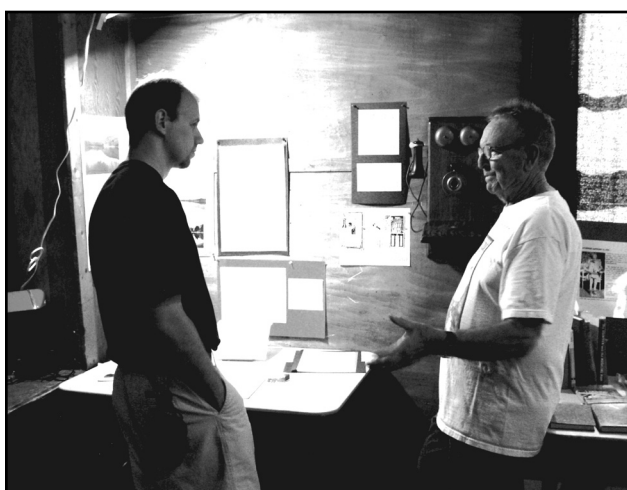
by Frances Roback

During Museum Days week last July, the Gray Creek Hall was a hive of people visiting displays, and of people visiting people, usually all at once. Janet Schwieger and Frances Roback of the Gray Creek Historical Society created an eclectic buffet of over 25 displays on local lore galore, drawing on collections from lenders and the society's archives.

There were displays on people, places, and stories from Gray Creek and beyond, in photos, videos, artwork and mementoes. Janet's Will Bayliss art display was a stunning array of more than 20 art works from six lenders, possibly the first ever display on this Crawford Bay artist in this region. If you remember the huge 1950s and '60s washouts on Highway 3A; rode the regular Greyhound bus between Creston and the ferry; raced in the Gray Creek Sailing Regatta; enjoyed a Tipi Camp nature program or the camper camaraderie of the Auto Camp; or wondered why no deer garden pests in the early days, all these and more displays were in the Hall to be discovered.

Museum Days' trial six day run provided a more relaxed pace for well over 500 visitors to tour displays, and make personal connections and discoveries. There was ample time to share stories, and to meet old Gray Creek friends. It was also a magical time of chance encounters between former East Shore residents who visit the hall during Museum Days. On one such memorable occasion, the Frasers, Burges and Oliver's converged at the Hall. Janet's photo tells more.

Including those on the cover, this mini gallery of photos by Frances Roback, Steve White and Janet Schwieger recalls some special moments.



Local journalist and historian Greg Nesteroff talks with Tom Lymbery, President of the Gray Creek Historical Society.



The Fraser, Burge and Oliver families' impromptu get together during Museum Days. From the left: Dr. Margery Blayney and her brother Don Fraser; John Oliver visits with their sister June Cook; Bill Burge reviews a Burge display binder; Frances Roback introduces Jim Burge to Beth (Oliver) Richards.



Long-time Gray Creek summer resident Shellye Lindsay and John Oliver with his 90th birthday present of Shellye's own design - a cushion cover on which she fabric-printed her photo of John's "Rainbow's End" sign.

## Very special thanks from the Gray Creek Historical Society

Our deepest gratitude to our Museum Days volunteers Beth Richards and Shellye Lindsay. Beth and Shellye put their personal lives on hold to help greet visitors, provide tours, and answer questions.

\*\*\*

A special thank you to Greg Nesteroff for covering Museum Days for the *Nelson Star*. More than one visitor came after reading Greg's article. Thanks, Greg!

\*\*\*

The generosity of lenders and donors was seen everywhere in the Hall. Blessed are people who keep photo albums, guestbooks, diaries and scrap-

books, and loan their precious property to the Gray Creek Historical Society for Museum Days. These were both the inspiration and rich resources for displays on the Tipi Camp; Burge family of Caribou Ranch; Catherine Anthony Clark; Gray Creek Regatta; Greyhound on the East Shore; natural disasters; campers of the Gray Creek Auto Camp; the Wirsig family; and the two Gray Creek Schools. Our very special thanks go out to the lenders and donors to this year's Museum Days. In alphabetical order they are: the anonymous lenders of Bayliss art works; Sandra Bernier

and Guiding Hands Recreation Society; Dr. Margery Blayney; Janet Bruce; Bill Burge; Jim Burge; Alan Cairns; Mary Carne; Gertie Casemore; June Cook; Kim and Gillian Deane; Leslie Drew; Peter Duryea; Lynn Fowler; Don Fraser; David George; Alex Johnston; Bert Learmonth; Veryl, Don, and Shellye Lindsay; Tom and Sharon Lymbery; Sherrill and Chris Millburn; John Oliver; Toby Reid; Beth Richards; the late Topsy Speirs; Kelly and Bill Strang; Gladys Todd; Jack and Marion Whitworth; the Wirsig family; Mary Zamniuk. If I've missed your name, please accept my apologies for this oversight.

\*\*\*

Our grateful thanks to Mel and Roxanne Gale, Janet and Ron Kuchinka, Kim and Gillian Deane, Jill Pennington, the Schwiegers, and Elfriede and Andre Wenger for your donations. The Wengers' \$500 donation is a legacy gift to the Society in memory of Elfriede's late husband Dr. Heinz Wenger, and we are deeply grateful for this generous support. Finally, a Rec 9 grant helped with the Hall rent and incidentals.

### A SACRED GATHERING

Sunday, September 19, 9:30 - 4:30  
Timbuktu, Gray Creek

A Day in Community, Nurturing Body, Mind & Spirit

- Dr. Rosalyn Grady - Guidance, Stories and Inspiration from the International Council of Indigenous Grandmothers
- Shayla Wright - Guided practices on Opening to the Nature of Presence.
- Christina de Pape - Awakening to Wisdom - a Hatha Yoga practice to assist us in opening to and embodying sacredness.

Sliding Scale \$55-\$75

Registration and info,  
call Christina: 250-227-9015

Email: stinadepape@hotmail.com



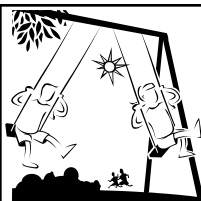
### KOOTENAY LAKE CHAMBER OF COMMERCE

#### NOTICE OF MEETING AND ELECTIONS

Andre Laporte, Treasurer  
&  
Paul Hindson, Chairman

The members named above are stepping down after lengthy service on the KLCC Executive. A meeting will be held Monday, September 20 @ 7pm at the Crawford Bay School to hold nominations/elections for these positions as well as Vice President and Secretary.

Please attend and show interest/support for your Chamber of Commerce.



### Thanks For Your Time

Many, many thanks to Jake Dulmage of Landworks Landscaping for the rock delivery and placement at the new school playground. Your hours of donated labour are appreciated by all.

Also, thanks to Yellowhead Road & Bridge for their help with distributing the safe fall chips around the playground. A community of kids thanks you heartily!

### Angus MacDonald, Reiki Master

Over 25 years experience...

Reiki is a mental, physical & spiritual healing process in which you learn through applying it to yourself and others.

- Reiki classes (Levels I & II and Master)
- Classes for groups of 3 or more.

Ongoing sessions available...

For more information, call 250-227-6874.



## Tom's Corner

by Tom Lymbery

### The Boom Town of Pilot Bay

In 2007 I had a visit from Wesley P. Walton, along with his family hoping to find out about grandfather Joseph Blanchard, who built and operated the Hotel Pilot Bay, having sold a hotel in Spokane in 1888. They brought a picture we had not previously seen of the beautiful three story building with bay windows and two 'carpenter gothic' peaks on the right and left. Where was the site? Another photo misled us as we thought it had been taken from the roof of the hotel. Garth Norris solved the mystery, finding the excavation for the basement, just behind Ray Besanger's B J Heights. It is inside the park for the Lighthouse so is unlikely to be disturbed, or built on. During a visit in 2010 some of the Blanchard descendants were amazed to see the site, and took home a barrel hoop and a brick, remnants from their great grandfather's hotel.

We are fortunate to still have the two brick chimneys at Pilot Bay to remind us of the large industrial site that just didn't make it. If they had been successful in smelting the difficult galena ore from the Bluebell Mine and others, Pilot Bay would have become an important town and there would be more records of what did happen. Somehow no one started a newspaper there -- Greg Nesteroff sends us gleanings such as from the *Nelson Daily Miner* "December 30, 1899 Mrs. Blanchard, Pilot Bay Hotel proprietress, an old timer in the Kootenays passed away yesterday, leaving a large family to mourn her loss." Also from the *Paystreak* (Sandon) 18 September 1897 - "The Spaulding House (at Pilot Bay) is being repaired throughout and will be opened under a new name next week."

However, it's very probably fortunate that they were not able to solve the smelting problems. With the heavy sulphide ore from the Bluebell Mine at Riondel, we would probably have seen devastation as the prevailing south wind would have carried the noxious fumes up the lake to Kaslo and beyond. The Trail smelter produced this when they processed this type of ore, resulting in killing virtually all the trees and vegetation nearby, until the smoke scrubbing process was initiated, to produce Elephant Brand fertilizer.

Thankfully Ted Affleck recorded much in his book *Kootenay Lake Chronicles* without which there would be little record of some of the earliest days of white men on Kootenay Lake, attracted by the visible lead ore at the Bluebell. Dr. Wilbur Hendrx became the man on site, funded by his brother Dr. Andrew B. Hendrx who needed a reliable source to supply his successful brass factory which manufactured bedsteads, bird cages, and brass fittings. Let's read some of what Ted wrote...

"The story of Pilot Bay really begins, however, with two Victoria capitalists, Joshua Davies and William Parsons Sayward, who were busy in the 1890's and 1890's extending their lumber empire throughout British Columbia. Attracted by the opportunities presented by the Toad Mountain discoveries, Davies and Sayward arranged with Victoria hardware dealers, Nicolles & Renouf, to have their agent, George T. Kane scout out a promising site for a sawmill. Kane chose Pilot Bay, a fairly central point for navigation on Kootenay Lake.

"On July 3, 1890, Davies and Sayward filed an application for a 300 acre townsite on the eastern shore of Pilot Bay, and proceeded with the construction of a sawmill. This sawmill, secluded from the view off the main lake, operated steadily until 1903 and apparently did good business.

"As early as 1896, Dr. Wilbur A. Hendryx had been casting about for a suitable Kootenay Lake smelter site. The Bluebell site was considered, then Balfour. At what precise time Dr. Hendryx fell in with the Rithet/Davies/Sayward establishment is difficult to say. .... The Pilot Bay site was not without merit, if one considers the waterborne traffic that prevailed in the West Kootenay District in the 1890s. Custom ore could be barged from all the mining camps on Kootenay Lake, including Nelson, and an excellent sheltered wharf facility could be built adjacent to the smelter. ... The smelter was built to serve as a custom smelter for lead and zinc, and it is possible if the smelters at Nelson and Trail for the smelting of copper, silver and gold had not branched out into the smelting of lead, and the technological problems which hamstrung the Pilot Bay operation might have been solved and the active life of the smelter might have been considerably longer.

"After much scraping for capital, a contract was let in the spring of 1892 for the construction of the smelter, thus creating a demand for skilled workers. Among the workers recruited was Fred Hansen, a carpenter then living at Kettle Falls, Washington. Hansen had some years earlier bought his Danish bride out from Omaha to work on the reconstruction of Spokane after the 1889 fire.... At the time of Hansen's arrival the settlers at Pilot Bay included, besides the sawmill families, the families of the Hendryx' twin-screw Galena, which was working with a barge to haul machinery, equipment, etc down from Bonners Ferry. Captain George Hayward was master of the Galena, and it was his daughter Daphne who in 1891 was the first baby born in Pilot Bay. The versatile Dr. Wilbur Hendryx officiated at the birth."..... In 1888 Hayward took command of the company's new twin screw Galena, plying between Bonners Ferry and the Kootenay Lake mining camps.

"During the years 1893 and 1894, the Galena ferried in hords of artisans and millwrights from Bonners Ferry to construct the smelter works and townsite. Brickyards were set up at both Pilot Bay and Balfour to supply brick for the smelter buildings, furnaces and stacks. .... the buildings were equipped with various machines of the most modern type and a battery of boilers with 200 horsepower capacity. The smelter stacks had a capacity of 100 tons of ore daily, the sampling works 150 tons per day, and the concentrator, 200 tons per day.... In the engine room was a 150 horsepower Corliss engine for the concentrator and sampling works, an 85 horsepower engine for the blower, and a 30 horsepower engine for the dynamo which supplied electric lighting to the whole works.

"Slightly to the south of the smelter works, a large and substantial wharf with warehouses was erected, and wooden sidewalk was constructed to wind up the slope to the business area of the town, which boasted the Galena Trading Company's store, a branch of P. Burns & Co., and two hotels, Clark's Hotel owned and operated by David Clark, and Blanchard's Hotel, owned and operated by Joseph Blanchard. Throughout their entire life, both hotels remained superlative establishments, Clark's appealing more to the gambling element and Blanchard's to the more solid family types. The company operated a boarding house known as the White House. Dwellings were constructed on the perimeter of the sheltered bays to the south and east of Pilot Point.

"The Pilot Bay Smelter was blown in on March 2, 1895. The ANNUAL REPORT of the B C Minister of Mines for 1895 contained a fairly buoyant report on the smelter, the first to chalk up any record of sustained operation in BC. During the 1895 year, 52,000 tons of ore mined from the Bluebell site consisting of first and second class (i.e. concentrating ore), lime rock for fluxing, had been barged to the smelting works, and that 2,500 tons of ore containing a gold, silver, and lead value of \$156,404 had been purchased from neighboring mines located on or near Kootenay Lake."

Affleck gives us a good look at the bustling, electrically lighted works with its adjoining town of businesses and hotels covering much of Pilot Bay with homes. This development meant other communities, such as Gray Creek had crews cutting cordwood to fuel steam engines and for heating and cooking in hotels and homes. The influx of workmen and their families required stores, suppliers and the first school at Pilot Bay. The school bell has survived and is lovingly looked after by the Tjader family at Pilot Bay.

I have quoted directly from Ted Affleck's book *Kootenay Lake Chronicles* published about 1976, sadly long out of print and extremely hard to find on ABE or used book sources. Ted very generously allowed me to use his writings, and I am sure he would approve of this article is he were still alive. Please let me know if you would like more on Pilot Bay in the next issue of *Mainstreet*.

## Fertilizing Ferry

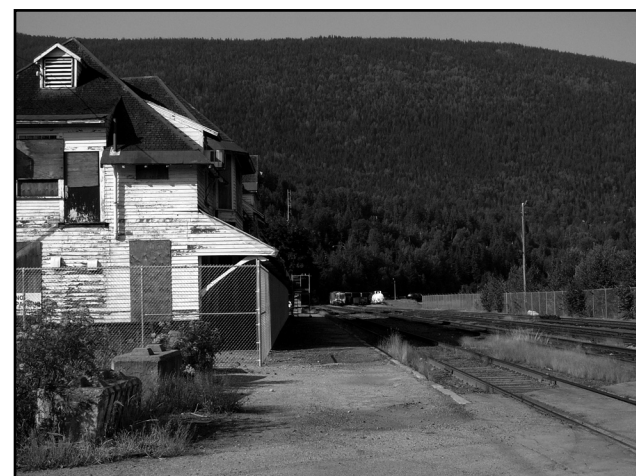
by Tom Lymbery



*M V Balfour fertilizing in mid lake from Cummings in Boswell. The boat is turning as this is the furthest south for her Wednesday trips in August. The high nitrate fertilizer used increases the algae bloom to provide feed for the Kokanee, which in turn are eaten by the Rainbow.*

## Repairs to Nelson Station

by Tom Lymbery



*The three storey Nelson Station is at last seeing repair with the roof being done first. It took years for the CPR to decide to sell it to the Nelson Chamber of Commerce, who will use it for their offices and information booth, as well as renting to other businesses. When finished we hope it will put Nelson on the Tour Train Track*

## From the Principal's Desk

by Dan Rude

In the past five days I have had five community members come up to me and say, "If there is anything I can do to support the school, please let me know." This generosity and attention to the life of our community fills me with energy to be creative in our school's development, and to keep looking at the possibilities that exist here on our beautiful Eastshore. As I see it, we are a community with a huge capacity and appetite for creating rich and meaningful learning experiences for our children and youth. I believe that we all have a voice – and a role – in this creation.

I spent a great deal of energy last year thinking about this year, in particular studying and dialoguing about ways to develop secondary programming that meets the needs and passions of our small, yet diverse group of youth. Through this process, and through the support of many members of our local community and beyond, we have created many new programming elements for grades 7-12 students that will begin this year. Our first 'Project Week' will run the week of September 20-24 during which secondary students will see their regular timetable put on hold. Students will all have the choice between an intensive Art workshop with our brilliant artist and teacher, Ted Wallace, and an Outdoor Adventures backpacking trip, co-led by Mountain Sense Guiding, Lori O'Neill, Kxx Citton, and me. Another Project Week is being developed (for dates to be determined) in May. We have significantly adjusted our timetable to include all academic and required Graduation Program courses to take place on Monday, Tuesday, Thursday, and Friday, with Wednesdays dedicated to a series of new initiatives. Our new 'Explorations in Lifelong Learn-

ing' course involves students participating in, helping facilitate, and designing - alongside teachers and local and regional community members - learning experiences around four themes: 'Arts, Media & Hobbies', 'Physical Outings & Events', 'Cultural Events & Community Connections', and 'Environmental Projects'. Wednesdays later in the spring will involve students in our new 'Community Mentorship Program', in which each student will develop two five-week projects alongside community members with similar passions. We have had incredible support from the Ashram in getting this project started, and from community members who have expressed interest in working on a learning project alongside our youth. Grades 10-12 students will have the option of enrolling in a work experience during these weeks. We have also been deepening our connections to local agencies that have expertise in healthy living and life skills, such as entrepreneurship and personal finances. The aim of this is to further involve our students in relevant workshops with local experts.

Another new development for this year that we are excited to share is the return of Jessie King in her new role as our classroom teacher for grades 4/5/6. Jessie volunteered her time and energy extensively with this age group last year through her rock climbing club, science workshops, and involvement in year end trips to Tipi Camp. She brings a passion for the outdoors, for environmental sustainability, and for being a continually active learner. She also shares our vision of creating personally meaningful learning experiences for our diverse group of children and youth.

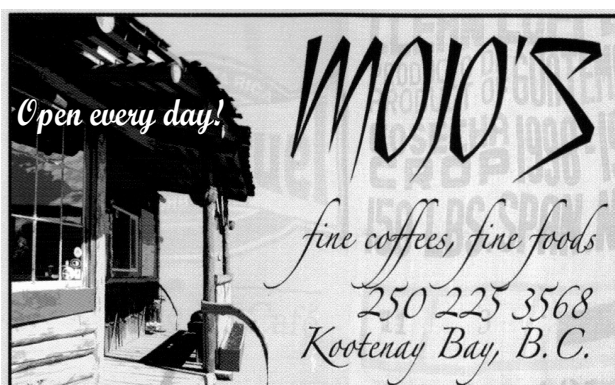
I'm fortunate to be surrounded by current conversations in education that speak of personalizing learning, meaningful project-based learning, leveraging the power of new technologies to enhance learning, and creating structures that support students in their natural curiosities. In these conversations, it is seen as an

supervision. Approximately 1200 full and part-time employees are dedicated to ensuring that students are successful by providing outstanding learning resources and opportunities, safe and clean facilities, efficient and safe transportation.

### Program Choice

We recognize that 21st Century learners deserve opportunities for learning that will support them well as citizens of a rapidly changing world. As such, it is important that we strive to offer a variety of learning environments through which students access core provincial curriculum. In addition to our highly successful community-based programs, we offer program choices such as: ACE-IT Trades Training Program in partnership with Selkirk College and College of the Rockies, the Wildflower Program, Distance Education, Valhalla Wilderness Program, Gordon Sargent Multi-Age Program, Homelinks, and skills academies for soccer and dance.

The citizens who reside within the boundaries of School District No. 8 can be proud of our public schools. Together we have accomplished much – and together we will continue to help our students thrive. We look forward to a successful school year. Please find out more about your school district through contact with our district office at 250-352-6681 or the district website ([www.sd8.bc.ca](http://www.sd8.bc.ca)).



advantage to be small, creative, and committed to local needs. I believe we are in a great position, as a small, rural school in a caring community, to be leaders in this current educational climate. And I would love for you to be involved.

### Massage Therapy Harreson Tanner, RMT Over 30 years clinical experience



\* Knowledgeable \* Skilled \* Experienced

Tuesday - Riondel  
Wednesday - Riondel/Creston  
Thursday - Yasodhara Ashram  
Friday - Crawford Bay Medical Clinic

For appointments, call 227-6877/505-6166

### East Shore Physiotherapy

New Health Centre, Crawford Bay



Anna Rose BScPT

Full Assessments and Explanations,  
Gentle Treatments, Home Programs

227-9155

## Welcome Back to School!

by Jeff Jones, CEO/Superintendent of Schools

On behalf of the staff of School District No. 8, I am pleased to welcome you to the 2010-2011 school year.

### We are a Public School System

We are pleased to welcome ALL students to our schools. Our mission is to focus on excellence for all learners in a nurturing environment. It is our privilege to work closely with our communities in order to position programs, facilities and learning opportunities and resources that attend to the diverse needs of all our students now and into the future.

### An Elected Board of Trustees

The Board of Trustees represents the interests of our communities and has been entrusted to make decisions about public education on behalf of the electorate. The Board governs the school district. It holds our district accountable for ensuring that our finite resources are used responsibly. It consists of committed and energetic individuals from varied backgrounds and varied life experiences.

### A Legacy of Student Success

School District No. 8 is recognized by the Ministry of Education as one of the top 10 districts in the province for our high graduation rate. Student results on provincial assessments and exams are typically at or above the provincial average. Our students become active, contributing citizens locally, provincially and globally.

### Exemplary Staff

We seek to attract the most highly qualified staff members to our school district. Once hired, we work together to ensure that we provide high quality professional and staff development and supportive staff

## EASEY News for Parents

by Laverne Booth

Huckleberry Children's Centre is gearing up for fall! To register your child, please call Arla Bennett at 250-227-6827 or email [arlabennett@gmail.com](mailto:arlabennett@gmail.com). Full enrollment is needed for start-up. Please register soon!

Strong Start begins on Monday, September 13 and runs from 9 until noon. All children up to six years and parent or caretaker are welcome to attend this free program. Snacks provided.

The East Shore Alliance Supporting the Early Years (EASEY) meets on Thursday, September 9 at 2 pm at the East Shore Family Place (at the Crawford Bay School). Please come and bring your ideas and concerns about child care and family support!

Many thanks to the Nelson and District Credit Union for the generous donation of \$2000 for the Naturescape play area that is planned for the play yard at the Family Resource Centre located at Crawford Bay School.

As with most construction projects, a whole lot of work and energy seems to go into the planning stage prior to "breaking ground." This is true for the Naturescape play area. The summer has been a time for ordering materials, sourcing supplies and finalizing the design. A storage shed has been ordered, as well as hardware for the raised beds, material for the stage and a large crawling tunnel. Plans are to begin construction mid September with the possibility of several building blitzes to happen throughout the fall. If any community member is interested in participating in this creative, worthwhile project for the wee ones of the East Shore please contact Dana Gallinger at 250.227.9893. All volunteers are welcome however those with construction expertise are golden!

## TOM SEZ

by Tom Lymbery

Invasive weed – GOLDENROD has exploded all over – much more invasive than the knapweed. Has the anti-knapweed treatment worked?

We are losing some of the world flags on the Boswell phone poles with Telus' pole replacement program.

*Kootenay Business Magazine* has Richard Deane, a manager at Teck Metals (COMINCO) Trail on the cover of the current edition. The accompanying article explains that the company is increasing their work force, with the metal markets improving.

Google "Gray Creek Estates" and you will find out about the ten acre lots they are selling, with access up the Crown Creek road. Are these some that were surveyed in 1908 to be sold for fruit growing - as Colin Haddon purchased his in Gray Creek?

Seagull time on the lake – they are here for the Kokanee spawning up the creeks. They can fill up so much on the spawned out fish that they can have trouble flying.

The former Cummings Resort has benefited from some of the material from the Akokli Creek Bridge construction – leveling an area that used to flood when 'The US Sturgeon Experimenters' released too much water from the Libby Dam.

ENJOY LIFE NOW – it has an expiration date!

I enjoyed Harvey Valgardson's struggles with his chainsaw. If you feel this way, please remember that saws purchased at Gray Creek come with a personal instruction course.

## BIG BASH FOR ALMOST FIFTY YEARS

by Wendy Scott

When the Arnott's gather friends to join them in a celebration, there's a very good chance that it will be memorable, unique, and well worth the experience of being there. But why, you ask, would a couple decide to celebrate Forty-nine years and eight months



of marriage! Harry has a perfectly logical answer, "You wouldn't get this lot here in December." This lot? Well all right, they include local friends, of course, but Harry and Sheila's daughter, Sophie Lukie, travelled from the Lower Mainland with her husband, John and two lively, blond sons, Joseph and Nicholas; Sophie's brother, Alistair, and his partner, Jayne, came to Riondel all the way from England; other close friends made the trip from Rossland, Lethbridge, South Korea, and various spots across this province and country of ours.

8 Mainstreet SEPTEMBER 2010

## GRAY CREEK PASS REPORT

by Tom Lymbery

Allteck Line Contractors had a major problem when one of their large line trucks tumbled completely upside down on August 9 on a spur road about 2 ½ miles up the hill. The driver was uninjured but Cory Scanlon of Western Auto Wreckers had a struggle to set it on its wheels, using their largest wrecker as well as a second smaller one. The damaged unit has been taken to Vancouver for repair. Allteck will have the project completed by early September, leaving little sign of the major transmission line that was built in 1951 -52 from Gray Creek to Kimberley.

The Pass Road has had some grading and is in as good a condition as it can get with the pit run gravel that was used when it was constructed. We can only hope that crushed is in the future. Allteck have used the main road for trucking parts, line and poles to Kimberley, but with only minor traffic disruption.

Don't forget a walk around tiny Oliver Lake, a short walk though the trees from Oliver Lake recreation site.

### YOUR HALL IS AVAILABLE...

For community events, wedding receptions, workshops...You name it!

Booking info, Kathy Donnison @ 227- 9205

### CRAWFORD BAY HALL

"your community hall"

A non-smoking facility.

Was it worth the trip? The atmosphere in the garden beside Bob's Bar and Grill had all the laughter and camaraderie of a carnival without the rides. Colourful canopies shaded tables all over the grass; flowering plants in pots added to the scent and colour of the B=bar's own flowers, and the hors d'oeuvres, drinks, and banquet – prepared and served by Wendy Miller and her staff, went far beyond carnival to compare and compete with dining at its finest.

The crowning glory of the meal was a layer cake that I'm sure was six inches thick and big enough to feed that garden full of people – and then some. Sheila and Harry's daughter, Sophie, is not only an expert baker, but her icing creation of basket weave and roses turned a big anniversary cake into a picture-perfect gem worth recording, framing and hanging.

Yes! Forty-nine and two thirds years is well worth a celebration!

Happy Anniversary, Sheila and Harry Arnott!  
And may there be many, many more.

## Kootenay Lake Rock and Soil

Topsoil, sand, gravel & organic cow manure now available for pickup & delivery.



Buy the yard...  
no load too small.

Call Russ at  
250 227 9559

## A BIRTHDAY SURPRISE

by Wendy Scott



A knock on the door is how it starts, and Maria greets a dear friend. She's burdened with platters, bags and boxes. It is your birthday, Maria Prest, but obviously this is not just for you.

The door continues to open until your living room is crowded with many more friends and your table is spread with sandwiches, sweet stuff, chips, cheezies, flowers, just about anything you want to drink, and of course, a big birthday cake. It has to be big, because you will entertain fifteen people.

But we know this will not be a problem for you, Maria, you have been an entertainer all your 'ninety-something' years, and you do the job very well. Looking at your face today, Maria, we can understand why you loved to entertain. You say you were beautiful once, we believe that you still are. Your eyes may not see as much as you would like them to, but they smile for you, Maria, and they show your joy and your sorrow. Your ears might miss a few words here and there, but your voice is still strong, Maria, and we can imagine you with your guitar, singing your songs. Music – happy, sad, loving, soulful – it has been part of those 'ninety-something' years.

I'll tell you a secret, Maria, a few of us in your living room today, have an idea what that 'something' stands for, but we promise not to breath a word. Instead we wish you happiness for as many more years as you can add onto that 'ninety-something'.

Happy Birthday, Maria, from all your many friends.

## SUNSET SEED COMPANY



Your Complete Farm,  
Garden & Pet Care  
in Creston, BC  
250-428-4614

NOW OPEN! We look forward to seeing you.  
1628 Canyon St, Creston (right next to 7-eleven)



# Harrison Memorial Church Celebrates 90 Years!

submitted by Brenda Panio

On a glorious sunny Saturday, June 25, Harrison Memorial Community Church celebrated its 90th anniversary. The service began with the Archbishop, the Most Reverend John Privett, blessing our "new" church bell that had just been installed. The bell came from St. Andrew's By-The-Lake, Willow Point. Ian & Joan Corner, caretakers of that church, were here to see their old bell being welcomed into its new location. The service of thanksgiving continued with the blessing of font, lectern and pulpit and a prayer of thanksgiving. Music was played by Deberah Shears and Kathy Turner, and the singing was led by the combination St. Anselm's (Boswell) and Christ Church (Creston) choirs led by Mary Smith Carruthers. The Archbishop gave an uplifting homily and as everyone left the church, during the final 'Triumph Voluntary' played by Kathy, they all took their turn ringing the bell.



The Cake: Anniversary Cake w/ pictures of the the church from 1920 & 2010, photo by Jim Gilbert

## Harrison Memorial Community Church (Anglican) Timeline

**1920** - Commander Matthew James Harrison erects a church in memory of his wife, Lucy Caroline, and his sons Geoffrey Richard, Thomas Edmund and George Basil. The church was called the Crawford Bay Community Church.

**1926** - Commander Harrison dies and the church is under care of his daughter, Anne Dorothea Gooch, who started the Women's Institute and put the church into their care.

**1944** - The Church is deeded to the Anglican Diocese of Kootenay with the provision to "allow members of responsible Christian Organisations, after the due application, to have full right to use of the said building for purposes entirely spiritual and religious, at such convenient times not conflicting with its use by the Church of England in Canada."

**1960** - Rev. Wm. Edington put forward the idea that the church should honour its builder and suggested calling it Harrison Memorial Community Church. In the April 1960 Jubilee edition of The Highway an article refers to the church as Harrison Memorial, but the picture of the church and the map showing where all the Diocesan churches are located still calls it Crawford Bay Community Church. By 1963, most references were calling it Harrison Memorial or Crawford Bay Community Church: Harrison Memorial.

**1970** - Up to this time services at Harrison were provided by the Parish of Kokanee; in August of 1970 the churches along the East Shore were shifted to the Parish of Creston.

**1974** - The Women's Institute, which had been maintaining the church ceased to function, but a group

Next Deadline:  
WEDS, Sept 22/10



Choir: The joint St. Anselm's (Boswell) and Christ Church (Creston) choir led by Mary Smith Carruthers (front), photo by Jim Gilbert



Ringing the Bell: The Archbishop John Privett ringing the bell for the first time in its new home at Harrison, photo by Jim Gilbert

of ladies kept the church going.

**1995** - Ed Fuzzen moved to the area and started doing weekly lay services – with the priest coming down the lake once a month.

**1999** - With the help of much community support, enough money was raised to put a new roof on the church.

**2006** - A highway sign for the church was acquired from St. Andrew's By the Lake and the local YRB crew put it up for us.

**2007** - Ed moved away, but other lay people continued with the weekly services (and some combined services with Riondel) until 2010, when services once again reverted back to once a month when the priest comes down the lake.

**2007** - With the aid of a grant, the inside of the church was painted

**2008** - With another grant, the outside of the church was repaired and painted.

**2009** - The outside of the church was finished and an electrical upgrade was done – paid for by a rummage sale that was held in the spring.

**2010** - A bell was acquired from St. Andrew's By The Lake and installed in time for the 90th Anniversary Celebration.

## Crawford Bay Store

Fall Hours begin after Labour Day:  
Mon-Sat 9 - 6, Sun 10 - 5

• Groceries • Deli • Natural Foods  
• Liquor Agency • Fishing Tackle • Gas

With the passing of August, we can look forward to the Fall...  
Always look in the store for fresh local fruit and veggies in season!

Bottle Depot Open Thurs & Sun, 10 - 2  
Commercial Depot Items on Thursdays only!  
All deposit containers accepted at the garage behind store.  
At all other times a max of 24 clean bottles accepted inside the store.

Phone: 227-9322 Fax: 227-9417

## ON THE MARK FLOORING

- Hardwood & Laminate Install
- Sand & Finish • Repairs
- Home Improvements

Mark 250.402.8875



When quality workmanship counts

- Stone and tile in every application
  - Hardwood and all engineered floors
  - Custom steam rooms and walk-in showers
- Electric heated floors and slabs
- Masonry heaters - 7 designs
- Quarry and cultured stone fascia
  - Wood stove maintenance
  - Chimney sweeps

**TILE WITH STYLE**

250-254-0107 • Office: 250-866-5246  
tws@wynndel.ca

**Cedar Moon Spa**  
 Massage and Esthetics  
 at Kokanee Springs Golf Resort

September special  
 \$25 pedicures

(250) 227-9226  
 or (250) 551-4337



## Afraid of Mice?

I can help!



Will: 227-9600

graphic design: print, web, signage...

THE HEXAGON PLAYERS  
 PRESENT...

## A Dramatic Evening

Sept 17, 2010

Two Performances at Crawford Bay School:

-One in the afternoon for students

-One adult-oriented performance in the evening, 8pm  
 (doors open at 7:45).

*The evening show is not appropriate for children.*

15 MINUTE HAMLET:

11 awkward scenes & as many deaths

The  
 Hexagon  
 Players

Pochsy:

Imagine Greek tragedy by Betty Boop



Caillie  
 Wallace

THE 15 MINUTE BIG LEBOWSKI

An adventure in bowling and friendship  
 with thugs and a carpet.

Howlin' Dan  
 and Leah Wilson

Evening Performance Cost: \$8  
 Children under 12: \$50

Pochsy and Hamlet directed by  
 Doreen Zaiss



## Second Hand Store

-Tools

-Household Items

-Antiques & Collectibles

-Appliances

-Toys

-New clothes, jackets, t-shirts  
 (for kids & adults)

Location:

Downtown Crawford Bay,  
 previously Crawford Bay Video

Phone for open hours.

250-551-2820

## Turlock Electrical Contracting Ltd.

Your Local Electricians

Commercial, Residential  
 Over 10 Years Local Experience

- New Construction
- Service Panel Upgrades
- Design Build
- Additions & Renovations
- Specialty Lighting
- Service Calls

(250) 227-9688 or cell (250) 551-4671  
 turlockelectric@shaw.ca

## Birth Announcement



Proud Grandma Fran, Auntie Sadie  
 and cousin Gaelin declare their undying devotion to  
 the newest family member:  
 Atari Hugo Henry MacDonald, born 27 June 2010.  
 Happy parents are Yuuki and Tobias.



## CRAWFORD BAY TRANSFER STATION SUMMER OPERATING HOURS

May 1, 2010 to October 31, 2010

9:00 am to 3:00 pm Sunday, Tuesday and Thursday

CLOSED on ALL Statutory Holidays

For more information please contact the Recycling Hotline 1-800-667-4321 or  
 Regional District of Central Kootenay 1-800-268-7325

## GRS CONTRACTING

SINCE 1980

Glenn Strom  
 Aaron Strom

Box 101, Crawford Bay BC V0B 1E0  
 Phone/Fax 250-227-9679

- Excavating • Logging
- Road Building • Gravel
- Rock Hammer

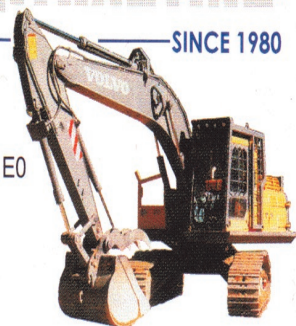
grscontracting@gmail.com

Cell: (250) 505-3075 or 505-3117

All Spec's of Gravel and  
 Drain Rock

Summer Special  
 \$150 Rate... \$110

Discounts for entire job.



1408 CANYON STREET  
 P.O. BOX 1219 CRESTON B.C. V0B 1G0

YOUR CONNECTION TO

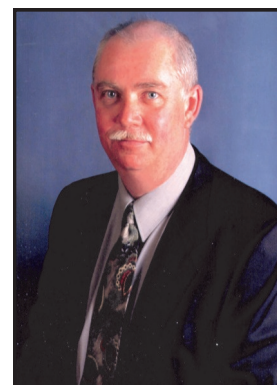
## East Shore Kootenay Lake Properties



Shelley Voight

Sales Representative  
 1-250-254-9599  
 Toll Free 1-800-428-9048

svoight@telus.net



Wayne Dunbar

Personal Real Estate Corp  
 1-250-428-1400  
 or 1-250-866-5126  
 Toll Free 1-800-428-9048

waynedunbar@gmail.com

## B57 EXCAVATING

serving the East Shore & Creston areas  
residential and commercial

- foundations, water lines
- trenching, road construction
- septic field installation
- fully insured

(250) 225-3375  
(250) 551-3201 cell  
b57excavating@bluebell.ca

P.O. Box 117  
434 Aspen Road  
Riondel, B.C. V0B 2B0

## THE GREEN MACHINE

ADOLF SCHMIDT SEPTIC SYSTEMS (ROWP)  
Riondel BC WATERLINES  
(250) 225-3485 LANDSCAPING  
BUILDING  
SITES, ETC.



## ON THE MARK FLOORING

- Hardwood & Laminate Install
- Sand & Finish • Repairs
- Home Improvements

Mark 250.402.8875

## Lattaco SERVICES

505-2858

Serving the East Shore  
Community Since 1999

- Courier Service
- Shopping Service
- Security Service

Will pick up and  
deliver DHL and  
Purolator packages,  
to and from Nelson.

## Dan's Ground Disturbances

A division of BDMCI corp.

Reliable, locally expanding friendly service



Services offered:

- \*Excavating
- \*Land Development
- \*Snow Plowing
- \*Land Clearing
- \*Dump Trailer

Cell: 250-551-4401 / Tel: 250-227-9110

Email: dansimpson@bdmci-eng.ca

## Sunnywoods Farm

Your East Shore Garden Centre

25% off all Trees and Shrubs  
Perennial Sale

Fresh, organic fruit and veggies  
in the Produce Market!

Hours: Daily, 11 to 5



15964 Hwy 3A,  
Crawford Bay  
250-227-9506



## HULLAND AND LARSEN

experienced residential construction  
and custom finishwork

(250) 551-2915  
(250) 505-3570

Get Started

My 100 Mile  
Mortgage

Every new mortgage will  
secure \$2000 towards the  
KLHF CT Scanner. Visit  
100milmortgage.com

East Shore Community Branch  
NELSON & DISTRICT CREDIT UNION *Logically. Locally.*

Rates are subject to change without notice and certain terms and conditions may apply.

Your Hike Is Long.  
Pack Wisely.

Talk to Vivi on one of her regular  
visits to the East Shore Branch.  
Call to book a chat.  
250.352.9256



Vivi Lindsay

Allard Insurance

AGENCIES LTD *Logically. Locally.*

Allard Insurance is a subsidiary of Nelson & District Credit Union.



Summer Hrs:  
9 am to 8 pm  
7 days/week!

## RIONDEL MARKET

Indian Summer? Come to Riondel for great fall fishing and camping and one of the best spots on earth to enjoy the fall colours that surround us.

TEL: 250.225.3214 FAX: 250.225.3226

## On the Eastshore of Kootenay Lake

Fall Hours Start Sept 16: 11am-5pm, Thurs - Sun.  
Until then, open 7 days/week: 10:30 - 5

End of Summer Sales!  
20% off Garden Fountains and  
Lava and Limestone Statues.

Check out our new website for more info:  
www.sacredjourney.ca

Special Events:

Sept 19 & 20: Spa Days with Annelly - pamper yourself  
with facials, manicures, pedicures and more!

Open Labour Day!

## Sacred Journey

(250) 227-6865  
www.sacredjourney.ca  
14435 Hwy 3A Gray Creek

## Custom Timber Structures



Pergolas, Outdoor Living Rooms & Arbors

Phone Ray Huss: 250-428-0458

customtimberstructures@gmail.com

This structure can be viewed 1 mile north of Mountain Shores at the end of Fir Rd.



Thank you from all the Kehler Family, to all the friends and neighbours in Riondel and along the East Shore who came to our Mom's 80th birthday party and in particular for all of the good wishes and blessings she is receiving from everyone. Thank you; we all love Riondel, and we are so appreciative of the home it has become for our parents and, through them, for all of us. With our most sincere thanks - Barbara, John, Beverley, Bob, Thomas, Douglas, Therese and Brian Kehler and John Kehler Sr.

**Turlock Electrical Contracting Ltd.****Your Local Electricians**Commercial, Residential  
Over 10 Years Local Experience

- New Construction
- Additions & Renovations
- Service Panel Upgrades
- Specialty Lighting
- Design Build
- Service Calls

(250) 227-9688 or cell (250) 551-4671  
turlockelectric@shaw.ca

## Trail Aquatic Center Hosts Kids Triathlon

by Juergen Baetzel

One morning while listening to the radio, I heard some information about the first kids' triathlon to be held in Trail.

Knowing that my own children had showed interest in doing such a challenge, I asked them if they were up for it. Of course, never having done such an event, they just shrugged their shoulders and said, "Sure, Papa." From that moment on I was antsy about their upcoming race than I've ever been about one of my own.

As far as practice goes, they didn't really have any, but watching me at races gave them a good idea as to what to expect. One thing we agreed upon was that this was not about winning, rather, having fun and a good experience.

Once we arrived in Trail the procedure was very much like an adult triathlon... check in, race package pick up, bike check-in and a briefing for the kids about the race sequences but mostly having fun.

The age of the participating kids ranged from four to eight and split into three different age groups to be fair and to keep control of the event. The organizers

started with the youngest ones and let them completely finish their race before starting the second wave of the mid-aged group in which my boy, Luka, would race. Luka started with a good effort in the swim and completed the distance just fine. Then, he was onto the bike and that's where the troubles started. His bib number kept snapping off. After that was sorted out and he was about to head out, his darn chain fell off! Well, we got that sorted out and he gave it all he had. He returned from his bike and transitioned flawlessly onto the run where he had an excellent finish. The eyes on the kid when he got his medal were the size of twonies - priceless. Call me Proud Papa.

Now it was time for the last wave of kids which would feature my girl, Zoe. Knowing how much she loves the water I didn't have any doubt that she'd kick some butt in the swim. Sure enough, Zoe was the first out of the water. Her transition went smoothly. After a solid bike ride and a good T2 she entered the run portion and had another solid performance which she finished sprinting across the finish line. I was proud as can be but I think the kids were rightfully proud of themselves. It was a great accomplishment and they truly enjoyed the fun of the sport and got a T-shirt with the word Triathlete printed on it as well as a medal. I'd like to thank the organizers who put the event on and gave kids and parents such an awesome experience.

As for myself, I entered Nelsons annual Cyswog N' Fun Triathlon, which, in my opinion, is a lot of fun and very spectator friendly. It is also the event that got me started in triathlon competition.

The swim across the lake and back underneath the orange bridge is more of a river swim because there is already a current. This year the swim was even more challenging because as soon as the start gun went off, a thunderstorm whipped through the valley and turned that earlier calm lake into an ocean-like scenario with two foot high swells pounding on top of every athlete. It was a tough swim.

On the bike the winds had somewhat calmed down and head wind was not such a big issue.

The running course in Nelson is famous for taking its toll on the athletes because of the steep inclines, but when one lives on top of Gray Creek Hill, well, let's just say that you know a lot about steep inclines. My run went really well. I finished the Olympic distance in 2 hrs 23 min and ranked place 14 overall which was pretty good in my books.

Now the countdown is on for Ironman Canada: seven days at the time of writing, but when the paper is out, I will have experienced this lifetime milestone. Feel free to ask me about my experience!



## BRANDON SALVIULO MEMORIAL SCHOLARSHIP FUNDRAISER

Sept 10 - 12, 2010 in Riondel, BC.

- Mixed Slo-Pitch Ball Tournament
- 4 on 4 Outdoor Shiny Hockey Tournament
- 2 Person Best Ball Golf Tournament

Prizes for all tournaments

Pancake Breakfast &amp; Hamburger/Hot Dog Stand: Sat &amp; Sun

To register or for more information,  
call Enzo or Laurel: 250-225-3456

Funds will be managed by the Creston Kootenay Foundation.

Scholarships will fund students attending  
College of the Rockies Firefighter Training Course.

## HARROP - PROCTER FOREST PRODUCTS

# Feed Your 100 Mile Wood Diet!

Buy local Forest Stewardship Council Eco-Certified Building Products at competitive prices from The Harrop-Procter Community Forest.

- Wide variety of cedar lumber
- Large selection of fencing material
- Bull-nose cedar decking
- Cedar and Douglas fir timbers
- Douglas fir and larch flooring
- Cedar, pine and fir paneling
- Cedar and Douglas fir siding

*We take special orders for other cedar & Douglas fir wood products*

Buy local and support the only  
FSC Eco-Certified Community Forest in BC!

**250.551.5452**

Go to [www.hpcommunityforest.org](http://www.hpcommunityforest.org) for further product info,  
and to view the documentary filmed about us.



## Rockwood Cafe

AUTHENTIC CHINESE CUISINE  
DINE IN & TAKE OUT

Open 12 pm to 9 pm,  
Tuesday - Sunday

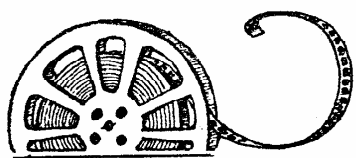
Offering Pad Thai  
and other specialty  
Asian dishes.



Hwy 3A, Gray Creek  
250-227-6840

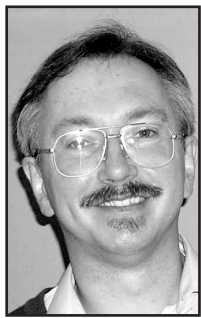
Closed on Mondays





## Seldom Scene

by Gerald Panio



Some of the world's great authors have created entire bookshelves—Dickens, Zola, Balzac, Spillane (just seeing if you're paying attention)—while others have written a single extraordinary book or a hand-

ful. The same holds true for the cinema. For every John Ford, Yasujiro Ozu, or Rainer Werner Fassbinder there's an Orson Welles, Stanley Kubrick, or Jean Vigo. A particular pleasure afforded by those more prolific geniuses is the likelihood of stumbling upon a lesser-known gem. Case in point: Alfred Hitchcock. Actually, that's Sir Alfred Hitchcock. If you're not a film fanatic, chances are you've only seen the usual Hitchcock classics—*Psycho*, *The Birds*, *North by Northwest*, *Notorious*, *Vertigo*, etc. Last year, I picked up an excellent DVD box set called Alfred Hitchcock: The Masterpiece Collection because it had a dozen classics I knew and admired. It also had a couple I'd never heard of. Which brings us to *The Trouble With Harry* (1955).

You know something unusual is going on when the Internet Movie Database recommends that people who enjoyed *The Trouble With Harry* also watch *Psycho* and *Snow Falling On Cedars*. If that makes no sense at all, and it shouldn't, it does tell you there's something odd going on here.

The IMBD tagline goes on to describe *Harry* as, "A comedy about a corpse." That sounds more like the kind of picture you'd expect to find starring Will Ferrell or Adam Sandler. Gross-out humour with some flatulence and necrophilia jokes.

Not really Sir Alfred's style.

Try this: "An insouciant comedy about a corpse." Now we're getting somewhere. No one would ever accuse Will Ferrell or Adam Sandler of insouciance. Then again, corpses aren't usually associated with insouciance either.

Let me try again. *The Trouble With Harry* is like *The Stepford Wives*...except that everyone is in on the joke. In *The Stepford Wives*, the entire population of that seemingly idyllic Connecticut town seemed so utterly "normal" that it was creepy. *Harry* is set in a seemingly idyllic village nestled in the mountains of Vermont, where everyone looks typecast—the struggling artist, the retired tugboat captain, the spinster, the young widow, the bratty kid, the absent-minded village doctor—but they all (except the doctor) talk and act as if possessed by the ghost of Oscar Wilde. Or Noel Coward. Or maybe both at the same time. Instead of being creeped by some seriously abnormal behaviour, we're captivated.

Incongruity is a splendid source of humour. I thought that the shock of having my expectations so thoroughly confounded might fade

on a second viewing, but I found myself with even broader smiles on my face as I marveled at a side of Hitchcock's talent that I'd never seen given such free rein. We're all familiar with black humour, and for some of us the epitome of it could be found in Hitchcock's mordant introductions to his televised stories on Alfred Hitchcock Presents. *The Trouble With Harry* isn't black humour. It's "Season of mists and mellow fruitfulness / Close bosom-friend of the maturing sun" humour. John Keats' "To Autumn," with a dead body.

The ironies don't end with the storyline (which I'll get back to in a minute). Hitchcock picked his Vermont location because, as with large swathes of Quebec and Ontario, the fall season turns the Vermont

hills and valleys into glorious patchwork quilts of the gods. Unfortunately, a few days after shooting began on the film a massive storm hit the region and stripped the trees bare. To finish the picture, boxes of leaves were shipped back to Hollywood, pasted on fake trees, and autumn resurrected. I'm not sure, but I think some extra paint might have been dabbed on here and there. Fraud in a splendid cause. Mother Nature was

likely in on the joke.

Back to the body. Endearing old salt, Capt. Albert Wiles (Edmund Gwenn), is blithely, illegally, and inaccurately hunting rabbits in the hills. He bags a can, a sign, and, apparently, a guy in a gray flannel suit and shiny brown patent leather shoes. The deceased, one Harry Warp, is stretched out decorously on the verdant sward, as if he'd chosen himself a particularly scenic burial plot. We get a great look at the shoes, but

nary a glimpse of his face. At this point, we might expect that Capt. Wiles might be more than a little distraught, panicky, guilt-ridden, even horrified by the hand fate had dealt him. Uh, no. He's genially discombobulated, a bit put out, and determined to bury Harry before things get any more complicated. And thanks to Gwenn's spot-on acting and Hitchcock's handling of the scene, we're

unexpectedly on the Captain's side.

Just as he's dragging Harry into the bushes, Miss Ivy Gravely (Mildred Natwick), dignified local old maid, catches him in the act. Now you know exactly how prim old maids are supposed to act in the face of clearly immoral behaviour. Play that scene out in your mind. Then try and figure out how you get from that to Ivy's inviting Capt. Wiles over for blueberry muffins, coffee, and elderberry wine.

Shortly after Ivy leaves him to his business, the Captain is forced to hide in the bushes when a young woman and her son come to check out the body (the woman's son, Arnie, had actually been the first to stumble across it and rushed home to tell mom). It turns out that the corpse is Jennifer's estranged husband. She's thrilled. When Arnie innocently asks, "Will he get better?" Jennifer replies, "Not if we're lucky!" Then they go for lemonade. The actress playing Jennifer is a very young Shirley Maclaine in her film debut. A lot has been written about

Alfred Hitchcock's obsession with blondes and the harsh treatments his scripts meted out to them; Shirley Maclaine seems to have been a significant excep-

tion. Dark haired, with reddish tints, Jennifer gets to be sassy and sexy and funny and not pay for it with a terminal shower or a leap off a tall building. Lucky girl.

Jerry Mathers, who plays her son, manages to be a smart-aleck without being a pain. That, too, takes talent.

The only other female role is Mildred Dunnock as Mrs. Wiggs, curmudgeonly owner of Wiggs Emporium, postmistress, and seldom-visited fruit-and-art stand proprietor. Her son, Calvin (Royal Dano), is the local, seldom-employed Deputy Sheriff. When someone asks Mrs. Wiggs where Calvin is, she succinctly replies "Off somewheres unimportant."

Jennifer and Miss Ivy are both scene stealers, and it's also a toss-up for the lead male role. There seems to be more foot traffic through Capt. Wiles' body-burdened bosk than on Wall Street at closing time, and another passerby is local artist Sam Marlowe (John Forsythe). We first meet Sam strolling into the village, singing lustily and dropping off yet another abstract painting that Mrs. Wiggs will never sell. Later, when Sam stumbles upon Capt. Wiles' predicament, he tells him to look on the bright side: "An act of God, perhaps—you should be grateful that you were able to do your share in accomplishing the destiny of a fellow human being." I'd never thought of John Forsythe as a comic actor. His wry, self-effacing humour in *The Trouble With Harry* complements his fellow actors' perfectly. Chemistry with Maclaine, complicity with Gwenn, waggishness with Dunnock and Natwick. And he's got just enough of a hint of a rogue in him to make the happy ending more of an interesting proposition than a certainty.

More plot, you say? One day. Three burials. Four exhumations. A haunted closet. A shadow with horns. A least one MacGuffin. You figure it out. You'll either end up sputtering like poor Dr. Greenbow, or wishing you were there.

(*The Trouble With Harry* is available at Reo's Videos in Nelson.)



CRESTON & KOOTENAY LAKE  
EASTSHORE

Welcome to...

15th Annual

Art Walk - Art Drive 2010

With venues from Yahk to Riondel

Thank You!

ArtLink wishes to thank all the participants, artists and venues in this year's ArtWalk.

We also wish to thank the Nelson & District Credit Union, the Creston & District Credit Union, and the Creston Community Arts Council for their continued support.



## New Acting Group Opens Local Stage

by Doreen Zaiss

"Time to start an acting group, don't you think?" Carol VanR suggested one rainy day in May. I was ready with my stock justifications for putting it off. But the inevitable eventually catches up. And this was the right moment. Carol's energy and clear commitment to the idea infected me. After putting the invitation out in the June Mainstreet I found seven willing and energetic players in the second hexagon of my house, and the Hexagon Players were born. Will we be a one shot wonder, a flipping disaster, or something bright and shiny new in the local arts scene? You'll have the chance to make up your mind in the Crawford Bay School theatre on Friday, September 17.

Our first challenge will be a modest one: Hamlet. Now, don't worry, I mean *The 15 Minute Hamlet* by Tom Stoppard. Because he's brilliant and funny, Stoppard has managed to cut the 3 1/2 hour tragedy into a 15 minute fiasco. And we figured that we just might be able to pull off a fiasco. You won't have time for boredom, for falling asleep in your seat, or for crawl-

ing out over other people's feet to escape a dreadful full version.

Who are we? I mentioned Carol Van R (Hamlet); Ingrid Zaiss Baetzel (the wretched King Claudius & the ghost of the former king whom Claudius killed); Janet Wallace (the wife of both kings); Kate Page (Ophelia, Horatio and Gravedigger); Jacqueline Wedge (Francisco & Laertes); and Lea Belcourt (Polonius, Bernardo and Osric). And two anonymous kids.

Howlin Dan and Leah Wilson picked up our challenge to do the impossible in 15 minutes. They will perform their expurgated and expunged version of the *Big Lebowski in 15 minutes*. Aficionados of that cinema classic should love this version. Stoppard didn't write it, but Howlin' Dan and Leah will live up to his standards and rock you in your seats. They have created two versions, one for adults, one for kids. How's that for accommodating?

The third and final event of the evening will be a quirky monologue by Caillie Wallace performing Karen Hines' *Pochsy*, employing a dark form of clowning and cabaret style song and dance. There's a shock value to the way Caillie's character flips between pathetic and merciless, innocent and ruthless, adorable and ... you can fill in that last one.

There will be a performance for kids during school hours, time to be announced later. Home-school kids and their parents are welcome to attend.

The evening performance will be for the adult public. See our poster for details.

## Kootenay

## Springs

## Softub

354-8557

Home shopping, free delivery & set-up

Email:

portablespa@msn.com



### New Nature2 low CL System

For more info go to:

[www.softubcanada.com](http://www.softubcanada.com)

*Next  
Dead-  
line  
Sept 22  
2010*



## Boccalino

[www.boccalino.ca](http://www.boccalino.ca)

on highway 3A, just 100 meters above the ferry landing in Kootenay Bay

Open for dinner from 5-10 pm (Thursday closed).

Call for reservations 227-6906

Watch for our final locals nights on our spacious covered deck w/ live entertainment by:

- Aug 28: Kate Loverock, belly dancing
- Sept 4: Simply Brass Band

We don't take RESERVATIONS on local's night - FIRST COME FIRST SERVE ONLY!

Come & enjoy our fine food & wines!

Gisela Conrad, Proprietress

Yves Rossi, Head Chef

Roger Kessler, Sous Chef



## Getting some Summer Holidays?



We have annual, single trip, family and senior's travel insurance policies that can go where you're going.

Our Hours:

Tuesday - Friday 9 am - 5 pm

Closed from 1 - 2 pm

Saturday 8:30 - 12:30

## Kootenay Insurance Services Ltd.

#16030 Hwy 3A, Crawford Bay

Phone: 227-9698

## COME VISIT US!



The working studios along Artisan Way, in downtown Crawford Bay, offer a wonderfully diverse collection of craftspeople.

Park at any one of our studios and take the walking tour. Take home a piece of the Kootenays, stop for lunch and visit all the other shops along Artisan Way.

Enjoy your day here!

**CRAWFORD BAY - ARTISTIC BY NATURE!**

[www.artisansofcrawfordbay.com](http://www.artisansofcrawfordbay.com)

Barefoot Handweaving 227.9655  
North Woven Broom 227.9245  
FireWorks Copper & Glass 227.9467  
Breathless Glass 227.9598  
Deer Ridge Pottery and Quilt Studio 227.9077

Dog Patch Pottery 227.6886  
Kootenay Forge 227.9467  
La Gala Jewelry 227.6828  
The Purple Door 227.6995



RDCK  
Recreation  
Commission No. 9

## Call for Grant Applications

Please submit your recreation grant-in-aid applications to the Rec 9 Commission by Friday, September 17, 2010. Application forms can be downloaded from the RDCK website or obtained from the Riondel Commission Office, Room #6 at the Riondel Community Centre. The Rec #9 meeting to review applications will be scheduled for early October 2010 and will be advertised on the RDCK website and in *Mainstreet*.



**pebbles**  
by Wendy Scott  
**Long-haired Stars**

There's a teddy bear cloud in the afternoon sky – arms and legs splayed wide to leap the Selkirk

Mountains peak to peak. As a child with wishbones, birthday candles, and first stars, my wish was always to fly – but not really like a teddy bear. In fact, that bear has vanished into a retro sky – clouds drift dark with fire beneath, hot pink and charcoal from the 1970's. After sunset, after the tip of the moon's crescent has dropped behind the mountains, Venus begins her descent through the soft ochre of August dusk; Saturn and Mars follow and leave the evening pale till nighttime brings dark brilliance. The Milky Way, like a heavenly rush hour highway, prepares the scene for a Perseides light show.

And quite a show it is. For two nights in a row, meteors streak across the sky like sparks from a campfire – brief, bright, and fiery specks of dust left behind by a visiting comet that is nothing but a large, lumpy ball of ice, rock, and dust with a few frozen gasses thrown in for good measure, and of course, a tail. Aristotle called the comet a star with hair, and the Greek word means exactly that: long-haired star.

And so the debris from long-haired stars rings in the night sky – brief and bright pings, picked up on radar and played back over the internet; doorbells sounding from the edge of space – from the home of electric blue clouds and shifting auroras. But an elliptical road leads the long-haired stars away from Earth past strange sunsets and an abundance of moons to carry wishes and dreams past Jupiter and into the star-

dust where, if you know how to listen, you can catch echoes from the very beginnings of time and space.

I often wondered what my mother's wishes were. A chance to make a wish was a serious event for her and she never wasted the important ones on wishbones that tended to break with the short piece in her fist, or birthday cakes too crowded with candles. No. She saved the long-standing, secret wishes for those first stars.

*Star light. Star bright. First star I see tonight.*

*I wish I may, I wish I might  
Have the wish I wish tonight.*

My mother was a faithful once-a-year gambler. Magazine kiosks and grocery counters had not yet gained 649 displays. My mother wished on stars and wagered her future on a flimsy piece of tissue covered with dates, patterns and numbers. The Irish Sweep was her ticket to Glory. She planned for months before the race and kept her ticket (never more than one) as safe as the diamond she never received or the amethyst that vanished on a Sunday morning with no one at home to catch its flight. "When my ship comes in," she would say. When my ship comes in was the solution for every worry and all the wishes yet unfulfilled.

Life has a way of stringing a line, through maybes and ifs and buts and now what's. It unravels, slowly at first, and then picks up speed as if there's a big fish surging up-stream. Sometimes there's a calming pool where dreams spin gently and children play with dogs and cats and daisies. Be careful, though, the wind will come and ruffle, then spin more quickly until the pool joins a swifter current to speed through summer and fall into the turmoil of a winter. But even winter has its calm pools.

My mother's horse never won a race but on a cool February day with just a hint of the coming spring, she told me of her dream: Her ship was in port. She lay in a deck chair – green, orange, yellow. The sky was bright, but she could see the star, dangling above the deepness of the sea.

Meteors are scarce in February, but it only takes one tiny, bright speck of stardust to carry a secret wish swiftly to its destination. She booked passage on the ship she knew would be there and she was ready to board.

Her star on that February night lit the way for her final voyage and carried her wish back to earth to land in a hidden place, beside a calm pool. There it will remain until a child discovers a need for her own secret wish. Then she'll keep it safe until she's old enough to trust a falling star.

**The Fitness Place**



**September Hours**

**At LEAST: Mon - Fri**

6:30 am - 10:30 am

Check at Fitness Centre for possible extended fall hours...

Please wear clean indoor shoes and bring a water bottle & towel.

\$30 for a month-long membership or \$5 drop-in fee.



the east shore bistro

250.227.9596

**BLACK · SALT · CAFÉ**

tues through sun

lunch and dinner

**Remembrance Garden**

by Wendy Scott

Another request has been added to the list at the engravers. This one, sent by Alan Low, is for his mother and father – Mary and Charlie Low. This will bring the total number of plaques to forty-three.

Garth Saunders has very kindly offered to take care of watering in the Remembrance Garden. This is a great deal of help. Thank you, Garth. You are certainly appreciated.

And many thanks to everyone else who lends a hand in this quiet place. The ferns will soon be finished and this exceptional summer will cool somewhat. While the heat lasts, the garden is a perfect place to sit in the shade.

Contacts: [wmescott@gmail.com](mailto:wmescott@gmail.com)  
[mcrowe@bluebell.ca](mailto:mcrowe@bluebell.ca)

**A Poem for Our Mother, Leni Wacheck, Who Passed Away August 29, 2000**

submitted by Elisabeth Soriat

So many things have happened  
Since you were called away  
So many things to share with you  
Had you been left to stay  
Though your smile has gone forever  
And your hands we cannot touch  
Still we have so many memories of you  
The one we loved so much  
Your memory is our keepsake  
With which we'll never part  
God has you in His keeping  
We have you in our hearts

Your loving family  
Elisabeth, Helene, Fred & families

**after the rain clears**

by Martinus Keerssemeeckers

ugly old house cracking up  
doors off their hinges  
raging storm inside  
shatters remaining windows  
and lifts the roof

it never was a happy house  
tall heavy drapes  
refusing any light  
monsters hiding in  
every dark corner

ready for demolition  
it sighs and moans  
with drooping eaves  
as screams echo  
in broken mirrors

little flowers running  
past rusty gate  
reach towards the east  
so at last they may kiss  
the rising sun again

**Next Deadline:  
Sept 22, 2010**



## Bible Talk

by Pastor Doug Middlebrook

**Mat 11:28 Come to Me, all you who labor and are heavy laden, and I will give you rest.**

This is the call Jesus made some 2000 years ago. This call has to do with the burden of sins and this call is for everyone. We all labor somehow, whether in our jobs, in keeping of homes and, yes, even in raising kids. There are many forms of labor and His call is meant for all of them. The good news is, He is still making this very same call today. He is asking all to come to Him and find rest. Once the call is answered and one receives Christ, the burden of past sins is dealt with and the journey to overcome sin begins. Jesus calls us all to come to Him and receive the forgiveness that can come only through Him.

In Bible times the Pharisees had placed a great burden on the people with laws that were impossible to keep. We read where they could not work on the Sabbath. This meant that they could not cook or do any manual labor. An extreme example of this would be taking a trip on the Sabbath which would necessitate taking their meal to the place of rest the day before so they would not have to carry it on the Sabbath. Jesus dealt with this law in Matthew chapter 12 verses 1-14. Reading this will give you an idea of how ridiculous the laws were that the Pharisees were trying to enforce. The call Jesus continues to make is a general one which will allow freedom into your lives. One thing I have noticed is that many people feel that they may not be worthy of His forgiveness. I believe that Jesus can and will forgive anyone who comes to Him with a truly repentant heart. He knows all that we have gone through because He, Himself, has been tempted in every way. (Heb. 4:15) Through His temptations He was able to remain sinless and is an example to us. The

burden of life, work, bills to pay, will always be part of our lives it seems. Jesus is telling us that it does not need to be heavy. It does not need to consume us and dictate our lives. In Him there is freedom from this.

**Rom 8:2 For the law of the Spirit of life in Christ Jesus has made me free from the law of sin and death.**

The law He speaks of here, is one that we can experience. He lived this life while He walked the Earth. He overcame the unbearable load by living a life that was pleasing to God. His call to us and for us is to have that same chance. Hear His call. It has transcended time. (AMP)

**Mat 11:28 Come to Me, all you who labor and are heavy-laden and overburdened, and I will cause you to rest. I will ease and relieve and refresh your souls.**

He does not say He will put an end to our trouble, but He will make it easier to bear. Walking with Jesus is not a free ride. It comes with trials and temptations, but in Him we can overcome these and live a life pleasing to God and enjoy the rest He promises.

The Lord's blessing be with each one.

**Create your own job!**  
**Small business accounts for 98%**  
**of all business in B.C.**

You may have a hobby or skill that with a bit of help could turn into a viable business. If you want to explore this more, call us for a free appointment.

The Self Employment Program offers income benefits for up to 52 weeks as well as business management training & counseling for qualifying entrepreneurs.

Call Erika at 250 428-5957 to book a free appointment in Crawford Bay  
[www.futures.bc.ca](http://www.futures.bc.ca)

**Community Futures Central Kootenay**  
 Growing communities one idea at a time.



## Bothamley - Versteeg

*Kelly Bothamley and Steve Versteeg were married in Riondel BC at 2:30 pm on July 29, 2010. Congratulations from your proud parents.*



*In early August volunteer members from the Creston Valley Rod & Gun Club were out once again placing gravel in Boulder Creek just north of Creston. The goal of the work, supported by the Fish & Wildlife Compensation Program and the B.C. Ministry of Environment, is to improve spawning habitat for kokanee in the fall. This year 11 yards of 1.5" minus (diameter), river-run gravel was placed in the stream – the third year in a row that the club has undertaken such stream restoration work in Boulder Creek. Anyone interested in joining the Rod and Gun Club should email [cprowse@kootenaywireless.com](mailto:cprowse@kootenaywireless.com). To find out more about the Fish and Wildlife Compensation program visit [www.fwcp.ca](http://www.fwcp.ca)*

## The East Shore MAINSTREET

Contact: Ingrid Zaiss-Baetzel

Phone: 250-227-9246 Fax: 250-227-9264  
 Box 140, Crawford Bay, B.C. VOB 1EO  
 E-mail: [mainstreet@theeastshore.net](mailto:mainstreet@theeastshore.net)

### \*\*ADVERTISING RATES

- \$35.00 - 3 1/4" wide by 1 3/4" high
  - \$40.00 - 3 1/4" wide by 2 1/2" high
  - \$45.00 - 3 1/4" wide by 3 1/4" high
  - \$50.00 - 3 1/4" wide by 4" high
  - \$55.00 - 3 1/4" wide by 4 1/2" high or 6 3/4" wide by 2 1/4" high
  - \$65.00 - 3 1/4" wide by 6" high or 6 3/4" wide by 3" high
  - \$85.00 - 3 1/4" high by 9" high or 6 3/4" wide by 4 1/2" high
  - \$100.00 - 3 1/4" wide by 10 3/8" tall
  - \$130.00 (quarter page) 5 1/4" wide by 7 1/2" tall
  - \$150.00 (third page) - 6 3/4" wide by 7 1/2" high or 3 1/4" wide by 14 1/2" tall or 10 3/8" wide by 4 1/2" tall
  - \$225.00 (half page) - 10 3/8" wide by 7 1/2" tall
  - \$400.00 (full page) - 10 3/8" wide by 14 1/2" tall
- Sample Sizes - more sizes available.**  
**Column Width:** 3 1/4 inches - double column width: 6 3/4 inches - full width: 10 3/8 inches  
**Services Directory:** \$5/month, up to 3 lines.  
**Classified Ads:** \$5/first 30 words, 10¢/word after the initial 30.

**\*\*THESE RATES ARE FOR BLACK AND WHITE ADS ONLY – FOR FULL COLOUR, ADD 30% TO THE ABOVE LISTED PRICES.\*\***



## BOOK REVIEW

by Tom Lymbery

*THE DOUKHOBOR PEOPLE, a Tribute to good Citizens*, by Ken Morrow, self published, 145 pages, \$14.95

This is Ken Morrow's fifth book, after writing his first and most successful *A Boyhood in Nelson*. As he says in this new book, most books on the Doukhobors have been most critical because of the destruction caused by the radical sect The Sons of Freedom. He points mainly to *Terror in the Name of God*, written in 1964 by Simma Holt, a *Vancouver Sun* reporter who came to Nelson to report on the trials of those charged with bombings and fires. Morrow says, "This is considered by Doukhobors to be the major source of misinformation about them."

Dr. Marcus Bach, a Professor of Religion from the University of Iowa, came to the Kootenays to write about the Doukhobors. Does anyone have a copy of his book? After building a home in Boswell, Bach, in another book said of the Doukhobor people, "They tell us they are looking for the Promised Land – they don't realize that they have walked right through it." Canada had welcomed them to our country, and never enforced conscription on them.

Morrow attempts to set the record straight, as he grew up in Nelson, and lived through the times of the Sons of Freedom sect who burned their houses, schools, and blew up power lines and railway tracks. Since they were pacifists they tried to avoid injuring anyone with bombs, setting the one in the Nelson Greyhound depot luggage locker for 3am, and those that knocked over the power line tower on this side of the lake, for midnight - shift change at the Bluebell Mine, so that no one would be trapped underground. Somewhat naturally, people whose lives were disrupted created feeling against all the Doukhobor people, even though it was a minority radical sect creating the problems. As Morrow explains, time has made amends for this bad feeling, especially since all the Doukhobor have become excellent Canadians.

What remains as a Great Canadian Mystery (please Google 'Farron BC'), is who set the bomb on the Kettle Valley Kootenay Express Train No 11 on October 29, 1924 that killed leader Peter V. (the Lordly) Verigin as well as six other people. This was never solved but how could it have been set by any Doukhobor, since they were pacifist? - to the extent that they were vegetarians, so did not even kill animals.

"This book praises a hard-working people who, despite the hardships and anguish of their past, are respectful of that spark of goodness in each of us which they call God," Koozma J. Tarasoff comments, an author who Dr. Ken Morrow has interviewed and quotes extensively.

### KOOTENAY LAKE CHAMBER OF COMMERCE

## NOTICE OF MEETING AND ELECTIONS

*Andre Laporte, Treasurer*  
&  
*Paul Hindson, Chairman*

The members named above are stepping down after lengthy service on the KLCC Executive. A meeting will be held Monday, September 20 @ 7pm at the Crawford Bay School to hold nominations/elections for these positions as well as Vice President and Secretary.

*Please attend and show interest/support for your Chamber of Commerce.*

## EastShore Community Library/ Reading Centre News

by David George

**Donation from library to school:** School is starting again this month. Our Crawford Bay Elementary & Senior Secondary School has a computer lab, which used to have mainly Apple Macintosh computers. After the old Macs became too old to use, the school was furnished with a system based on IBM Windows computers.

As those of us who have used computers for some time know, Mac is superior to Windows for many reasons, especially in the realm of graphics and video applications. Macs are also effectively immune to viruses, due to their technically superior Unix based operating system. Macs also do not require the user to constantly buy new versions of software.

Having said all that, our library patrons know that our public computer is in fact a Windows Vista computer, and some, especially our volunteers, know that the circulation computer is a Hewlett-Packard running Windows XP. The main reason for these two computers being Windows based is economic. Your library could not afford to buy Macs when we needed to computerise our system. Now if someone had donated good nearly new Mac equipment, that would have been another story.

In fact, last year we were given a not-too-old iMac desktop computer by the Creston Library through their Librarian Ann Day. It was not in good running condition, but given a little care, it now runs well. We thought that we would use it as a backup in case our public computer failed. Well, the public computer has run so well, that we have not needed a backup yet.

We are therefore giving this iMac on long-term loan to the school's computer lab, to join their few other Macs and give students the ability to try Mac applications such as iMovie and iPhoto. We hope that knowing something about both Windows and Mac systems will help our local students.

### A SACRED GATHERING

Sunday, September 19, 9:30 - 4:30  
Timbuktu, Gray Creek

*A Day in Community, Nurturing Body, Mind & Spirit*

- Dr. Rosalyn Grady - Guidance, Stories and Inspiration from the International Council of Indigenous Grandmothers
- Shayla Wright - Guided practices on Opening to the Nature of Presence.
- Christina de Pape - Awakening to Wisdom - a Hatha Yoga practice to assist us in opening to and embodying sacredness.

*Sliding Scale \$55-\$75*

Registration and info,  
call Christina: 250-227-9015

Email: [stinadepape@hotmail.com](mailto:stinadepape@hotmail.com)



## Next Deadline:

### September 22, 2010

[mainstreet@theeastshore.net](mailto:mainstreet@theeastshore.net)

250.227.9246

## Riondel Community Library

by Muriel Crowe

The library's annual book sale was a huge success again this year. My thanks go to all of the great people who helped with the set up and the repacking at the close of the sale. Thank you also to all who came out and bought books. We raised \$400 which with our overdue fines will go to the "Community Centre Roof Fund" at the end of the year. Several years ago I was asked about holding the sale for two days and turned the idea down. It seems that there were quite a few people planning on coming back for the second day of the sale this year and we certainly had enough books to do it so perhaps next year that will happen. This will depend on being able to attract even more volunteers than we had this year.

Our thanks to RDCK, Bill Nelson and Norm Bonnell for the replacement of many of the ceiling panels in our second room and in the hallway. These were damaged and stained when the roof leaked. We are all hoping that they will stay in pristine condition until and after the new roof is in place. Remember that you can make a donation to the roof fund at the Commission office. Donations are classified as a charitable donation for income tax purposes.

There is still a short time to plan your fall fair entries and we have books that can help. We also have a good collection of books about canning, freezing and making wine to use up all this wonderful garden produce. In a mood to just relax and enjoy life - we have books to help you do that too.



### AREA "A" EDC Economic Development Commission

#### \$7,000 in funding available:

There is \$7,000 still available this fiscal year for grants or projects for Area A (East Shore) relevant to the promotion and encouragement of economic development. Please send in your application early so we can help you to succeed.

#### Funding approved in June 2010:

Kootenay Lake Chamber of Commerce - \$672 to promote CBESS and other non-profit East Shore amenities in Visitor's Choice mag  
Green Boating Alliance: \$2120 - for environmental education, safety, courtesy, and water quality promotion for Kootenay Lake  
Crawford Bay Sunday Markets - \$1000 for advertising  
Parent Advisory Committee, CBESS - \$800 for school website improvement  
KLEECA - \$200 for a promotional video for the East Shore

#### Next Application deadlines:

**October 7, 2010 .... February 7, 2011**  
Approval/funding lag time 6 to 8 weeks

An application form can be printed from the RDCK website following this path:

[http://www.rdck.bc.ca/corporate/grants/electoral\\_area\\_a\\_economic\\_development\\_grant.html](http://www.rdck.bc.ca/corporate/grants/electoral_area_a_economic_development_grant.html)

Email [lornarobin@bluebell.ca](mailto:lornarobin@bluebell.ca)

Or call 250-225-3333 for more info

**Visit InvestKootenay.com**

**SERVICES DIRECTORY**

The Service Directory is a great way to have your business listed as a reference for those shopping for a particular professional service. Keep your phone number handy and your message clear.

**AUTOMOTIVE/MARINE**

**NORTHSTAR CRESTON** - 1-800-551-9351. Full service 8-bay shop featuring Goodwrench Service - \$41.95, genuine GM & AC Delco parts. Full line of major tire brands featuring: BFGoodrich, Michelin, Uniroyal, Hankook, Goodyear and Firestone brands.

**BUSINESS SERVICES**

**MUTUAL FIRE INSURANCE** of B.C. Quotes on Homes, Mobiles, Farms & Tenants. Seniors discounts at 55. Home Protection; No Claim; New Home. ph/fax 250-428-7937, broker Virginia Harder.

**CONSTRUCTION/CONTRACTORS/TRADES**

**CC ENTERPRISES LTD** - "Sensitive Sites our Specialty." Road building, logging, land/house site development, self-loading log truck/dump truck, excavators/dozers, sand & gravel. Chris Choquette: 825-4701 or 354-9238.

**HULLAND AND LARSEN CONSTRUCTION** - experienced residential construction and custom finish work. 250.551.2915 or 250.505.3570.

**MARK JOHNSTON CONSTRUCTION LTD.** Ph: 250-227-9583, email: info@mrkjc.com

**PIETE CONTRACTING LTD** - Road Construction, Land Clearing, Excavating Basements, Certified Septic System Installation, Belly Dump, B-Train, Lowbed, 200 Hoe, Cat, Sand and Gravel, No Post Dividers. 250.227.9051 or 250.505.9915.

**PROFESSIONAL PAINTER** - 15 yrs experience in residential setting. Free colour consultations. Call Petra @ 250-777-1062 or 225-3250.

**R&R REPAIRS:** For all appliance repairs and satellite troubleshooting, sales and installations. Phone 225-3532 for messages and 354-3564 cell. We sell and install cameras and home intrusion systems for home security. Give us a call to find out more. All work guaranteed

**TURLOCK ELECTRICAL CONTRACTING LTD.** (See colour ad in this issue for more information.) 250-227-9688 or 250-551-4671

**TWS CONSTRUCTION SERVICES & CHIMNEY SWEEPS** - flooring, stone tile masonry, woodstove maintenance, concrete contractor, renovations. Contractor insured. 250.866-5246.

**PERSONAL CARE/HEALTH**

**ALEXIS PHILLIPS, M.A., R.C.C.** - Registered Clinical Counsellor specializing in complex trauma, relationship issues, grief & loss, anxiety & depression. Apptmnt/consultation, call 227-6824.

**ANIE BOUDREAU - YOGA THERAPIST.** Private therapeutic yoga sessions - 250.505.6540

**An ASTROLOGICAL CHART READING** will give you awareness and understanding of your life and your current situation" A chart reading is useful in times of uncertainty and stress. Contact Susan at 250-227-9626

**BLANCHE TANNER** - Breath Practitioner, (Family Constellation) Heart-Centred Therapy (Meditation), Healing Emotional, Physical & Sexual Abuse, Addictions, Relationships, Anxiety, Depression. 227-6877

**COUNSELLING & SUPPORT SERVICES:** Free and Confidential for children, adults and families. Services include: Adult Mental Health and Addictions; Child Youth Mental Health; & Family Support. Call 1-866-774-5324 (toll-free) or 250-353-7691. North Kootenay Lake Community Services Society.

**FIRST CONTACT EAST SHORE MIDWIFERY** - Sylke Plauermann, registered midwife. 250-227-6846.

**MASSAGE & FOOT REFLEXOLOGY-** Relaxing Ayurvedic Massage: Susan Snead is now available for sessions at Barefoot Weaving and Tara Shanti. Call 250-227-9626 for appointment.

**MASSAGE, SHIATSU - DEEP TISSUE - REIKI,** mobile or in Crawford Bay, call James Wood, 250.227.6849 for an appointment.

**REGISTERED HERBAL THERAPIST, MASTER HERBALIST** - Maya Skalinska, M.H., R.H.T. Iridology, Tongue & Pulse analysis, Nutritional consultations, individual herbal remedies, Flower Essence consultations & remedies. For appointments, please call 250-225-3493.

**PSYCHIC CLAIRVOYANT** - Past lives, ancestral quandries and entity awareness. 250.225.3250.

**REGISTERED ACUPUNCTURIST** - Christine Peel, R.Ac. Traditional Chinese Medicine treatments including Acupuncture, Moxibustion, & Cupping. Call 505-8130.

**REGISTERED MASSAGE THERAPIST:** Harreson Tanner - Over 30 years clinical experience. Treatment of Lumbo/Sacral Strain, Whip Lash, Frozen Shoulder, Migranes/Headaches, TMJ problems, & Stress. No doct referral req'd. Call: 227-6877/cell: 505-6166.

**RESTAURANTS**

**BOCCALINO RESTAURANT, MOTEL & CABINS** - We are open for dinner from 5-10 PM (Thurs closed). Come & enjoy our fine food and wines or order a whole roasted chicken 24 hours in advance - we roasted it, you pick it up, for \$20

**BUNKERS GRILL AT KOKANEE SPRING** - Open for the season and serving breakfast, lunch and dinner. Call 227-9393 to reserve.

**CRAWFORD BAY HALL & COMMUNITY CORNER BUILDING** - available for community events, wedding receptions, workshops etc. Non-smoking facilities. Call Kathy, 227-9205.

**DESTINY BAY RESORT** - 11935 Highway 3A - Boswell open for dinner each evening until September 19th by advance reservation 250-223-8234 or 1-800-818-6633.

**MAXX & NAMBI'S KITCHEN** - Open Sundays, 9 to noon with full breakfast menu. Hwy 3A in Crawford Bay. 227-6854.

**NEWKEY'S PLACE** - Hwy 3A in Crawford Bay, licensed area. Open 10 am til close Monday to Sunday. Food Specials all day. 227-6911.

**ROCKWOOD CAFÉ** - Authentic Chinese food, great pizzas and perfect burgers. Open Tues - Sun. Hwy 3A Gray Creek. 227-6840.

**YARD/LANDSCAPING/SITE PREP**

**ALL-RITE ROOTER/SEWAGE PUMPING SERVICES** - Septic tanks pumped. Field lines cleaned. Plastic septic tank riser sales. Edwin and Elizabeth Johnson - 428-9097. ROWP. Red & White Truck.

**TREE SERVICE, RESIDENTIAL** - Thinning, pruning, limbing, removal, falling. Free estimates. Call James Linn at 225-3388.

**STEEL WHEELS** - We dig. Registered on-site wastewater practitioner. Dave Hough - 227-9646.

**Next Deadline:  
WEDS, Sept 22/10**

**CLASSIFIED SECTION**

**AUTOMOTIVE/MARINE**

**1978 aluminum Star Craft** boat (excellent condition). 140 OMC inboard/outboard, 7.5 Yamaha Kicker (excellent shape), Fish Finder, Ship to Shore Radio, Trailer. \$6,000. Phone (250) 225-3567

**1993 30ft Siera Travel Trailer** rear bedroom f/s microwave t/s new awning well maintained. \$8500. Ph. 250-357-9680 Email jlsoriat@telus.net

**Telescopic Boat Hooks** - extend up to eight feet, but are only 3 1/2 feet when retracted. The hook end is plastic so it's easy to get your dog back in (as long as its wearing a life jacket) - Gray Creek Store.

**Flat Fix** - to seal and inflate tires on cars or light trucks; carry this for back road travel, \$10.95 - Gray Creek Store

**Roadside Emergency Kits** \$39.95 - with everything from jumper cables, tire sealant, to an emergency blanket, first aid kit, and more - Gray Creek Store

**BUS. ANNOUNCEMENTS**

**Sirdar General Store** - A unique place to shop on Duck Lake. Angling & Hunting Licenses & Tags, Plus 2010/11 Migratory Bird Permits, Trout & Bass Tackle, Gold Pans, Life Jackets, Groceries, Chocolate & Energy Bars, Cold Drinks-Water, Juices, Energy Drinks, Pop, Ice Cream Treats, Chips, & Nuts. Postal Service. 8050 Hwy 3A, 250-866-5570 or Fax 250-866-6811. Happy Labour Day, & watch for children walking and catching School Buses-slow down-it's only 60 kph through Sirdar!

**Insurance certification** requires professional chimney

**18 Mainstreet SEPTEMBER 2010**

installation - we are the Professionals - Gray Creek Store

**BUSINESS SERVICES**

**Fax service,** photocopies, (with no PST/GST) Tom Lymbery - Notary Public, 250- 227-9315, fax 227-9449

**CLASSES/WRKSHOPS**

**Beginner Belly Dance** classes at Tara Shanti 7:00-8:15 pm. Sept. 8-29, by donation. For more info phone Amanda 225-3346

**EMPLOYMENT OPPS**

**Visit InvestKootenay.com** for East Shore opportunities to buy or sell a business and more.

**House Cleaning:** We are looking for help cleaning our house one day a week. Call: 250-227-8951.

**Farmsitter Wanted:** We are looking for a farmsitter from early November 2010 to mid March 2011- for more information please e-mail us at info@tb2.ca

**HOME/BUILDING**

**Tidy up around** your construction work site with a magnetic rake; works wonders before your tires find the nails and screws - Gray Creek Store. Reg \$49.50, Special \$37.50

**Lifetime Wood Stain** (the non toxic one). You wouldn't want to drink it, but a dog can! - Gray Creek Store

**Log tongs-** orange for lifting, blue for skidding. (the lifting ones are special steel) - Gray Creek Store

**Heavy Duty Extension Cords** -50' 3/12 with lighted end, so you know that its live - Gray Creek Store

**Finest quality Benjamin Moore Paint.** Please phone 227-9315 or 227-6855 to make sure that we have a tinting specialist on shift - Gray Creek Store

**Plumbing Adaptors** that fit pex, poly B, or clear tubing - don't need clamp tools, great for RVs & tight spaces - Gray Creek Store

**16', 20', 24', Industrial Aluminum Ladders,** plus a 8' to 13' multiway ladder. Gray Creek Store

**Live Animal Traps** - Squirrels to Raccoons - \$24.95 to \$79.95 - Gray Creek Store

**Roofers Fall Kit** - roof anchor, D ring harness, 50' lifeline, rope grab and 2" shock absorbing lanyard - Reg \$207, Special \$189 - Gray Creek Store

**Grip-o Log Splitter** - no hydraulics to freeze or leak - 2 second cycle time, uses the effort of two flywheels. Reg \$3400, Now \$2995 - Gray Creek Store

**MISC FOR SALE**

**Aluminum Garage Door** - 8X8, \$250. 250.505.7570

**Plenty of Pulaskis** with fibreglas or wooden handles - it may be a tough forest fire year - Gray Creek Store

**Motorcycle Gloves:** Watson quality \$49 - (up to \$75 at a Motorcycle shop) - Gray Creek Store

**Free phone books** - the new BETTER BOOKS are here - take extra for your office and car - Gray Creek Store

**Straw cowboy hats:** \$4.95. Flip flops in amazing colours. Bamboo Blinds from 3' x 6' to 8' x 6' - Gray Creek Store

**Electric Toothbrush:** if you use one you will wonder how you cleaned manually, battery @18.95, rechargeable \$23.95, and your dentist will complement you - Gray Creek Store

**The Thermometer Fork:** LED readout - accurate readings from rare to well done \$17.95 - Gray Creek Store

**"Dorothy's Stormy Lake"** vol. 4 is here - \$19.95. Complete your collection - Gray Creek Store

**Hydrographic chart** of the Lake. boater's necessity, hard to find anywhere but Gray Creek Store

**NOTICES**

**The 99th Kootenay Lake Agricultural Fall Fair** is being held on Saturday September 11, 2010 at the Crawford Bay Hall. Exhibits will be accepted at the Hall on Friday September 10 from 3:00PM to 7:00 PM. The fair will open to the public on Saturday Sept 11 at 1:00PM. Advance entry tickets can be purchased by contacting Mike and Ivy Jeffery at 250-227-6807 or Jeanne Lahnmann at 250-227-9082.

**Volunteer Your Time...** Transcriptions and translations of Deconstructing Dinner greatly increase our audience. We request your help in transcribing our audio broadcasts, or translating existing transcripts. Transcribing for Deconstructing Dinner is a valuable way for you to assist this project and ensure that this vital information has the opportunity to reach as many people as possible. Upon successful completion of a transcript, we will proudly post your name as the transcriber. This is a great asset to any resume! Thanks for contacting me to get involved at dd.admin@cjly.net

**Convenient, clean & safe** downtown parking. Park at the Nelson Parkade - Sunday \$3.00 all day. Wkdays \$1.50 for 2 hours, or \$3.75 for all day. 1/2 block off Baker on Vernon Street 354-8834.

**OUTDOORS/REC**

**Dog Life Jackets,** in three sizes from extra small to med - Gray Creek Store

**Hiking Poles** - telescopic with interchangeable tips for different ground conditions. Sets of two or singles - Gray Creek Store

**The Hunter's Hoist Kit** -the easy way to string 'em up. Can we persuade you to delete some of our surplus deer? - Gray Creek Store

**Log Lifter** with hickory handle, get your log off the ground for easier firewood cutting \$97.50 - Gray Creek Store

**PFD - Personal Flotation Device.** Make sure your life jacket fits and WEAR IT. We stock many sizes and even those for dogs - Gray Creek Store

**"Find an ounce of gold a day"** with our gold panning kits, or check the beaches for antique coins with a Metal Detector - Gray Creek Store

**RENTALS/REAL ESTATE**

**List your property** on the Kootenay Lake Real Estate web site. Realtors, as you know it is almost impossible to find Kootenay Lake properties on the MLS system. This focused site gets excellent traffic from potential buyers and rates are very affordable. Also a great site for Sale By Owner listings. Visit www.kootenaylakerealestate.com for more information.

**Waters Edge B&B** taking bookings for this coming season. Check out the web site. watersedgebb.ca. Inquires - 250-225-3492.

**YARD & GARDEN**

**Flat Planting** of Wildflower seed blooms earlier next year - Gray Creek Store

**Use a garden hose** to flush or service your outboard. Hose adaptor kits \$13.95, Gray Creek Store

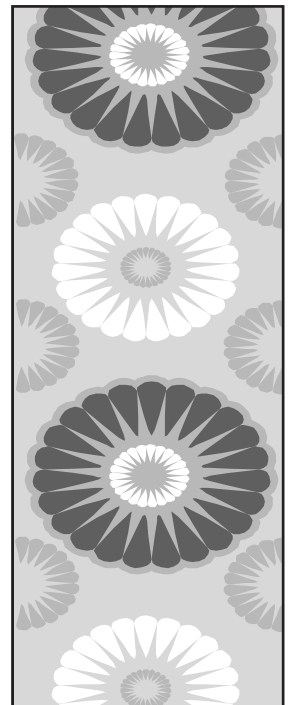
**Deer Scare** (sprinkler with motion sensor) - the sudden starting sprinkler will frighten any animal - \$69.95 - Gray Creek Store

**The Bucket Saw:** for tree pruning, can be used with one hand, an innovation from Jonserved / Husquvarna, or a narrow bodied electric saw - Gray Creek Store

**Garden Hoses Galore** - We got a big shipment at great discounts - Gray Creek Store

**Mantis Tillers** - the lightweight that you can even cultivate raised beds with. Try our demo unit - Gray Creek Store.

**36" Reach Extender** \$22.95 - easily picks up from cigaret butts to full beer bottles - be ready for spring yard and highway cleanups - Gray Creek Store



# BULLETIN BOARD

## Community Notices, Thank You's, Not-For-Profit Announcements (all not related to business), Church Calendar & Meeting Places - free on the Bulletin Board.

### CHILD HEALTH CLINIC, ADULT IMMUNIZATIONS, PUBLIC HEALTH NURSE

Will be at the East Shore Health Centre monthly.  
For further information, call Creston Health Unit at 250-428-3873.

### EAST SHORE COMMUNITY HEALTH CENTRE Call 227-9006

**\*See calendar for doctor days\*** - Doctor hours are from 9:30am to 4:30 pm. Please call 227-9006. Also in clinic: Interior Health Authority, Community Care Nursing and Home Support Services, Tues - Fri, 8:30 am to 3:00 pm. Phone: 227-9006, Fax: 227-9017.

### PHYSICIAN COVERAGE FOR September 2010

Sept. 1st Wednesday - Dr Moulson  
Sept. 7th Tuesday - Dr Grymonpre  
Sept. 8th Wednesday - Dr Moulson  
Sept. 9th Thursday - Dr Grymonpre  
Sept. 14th Tuesday - Dr Grymonpre  
Sept. 15th Wednesday - Dr Moulson  
Sept. 16th Thursday - Dr Grymonpre  
Sept. 21st Tuesday - Dr Grymonpre  
Sept. 22nd Wednesday - Dr Moulson  
Sept. 29th Wednesday - Dr Moulson

**Note: Please call to cancel if you can not make your appointment. We always have a wait list for patients needing to get an appointment. With limited doctor days and time at our clinic and with the summer season upon us, this is very important.**

**Please Note: Lab hours 7:30 - 10:30, Weds Mornings. Call to make appointments at 227-9006 on doctor days and Thursday morning. Tuesday, Wednesday and Thursday (8:30 to 12:30) New Phone: 250-227-9006 Fax : 250-227-9017**

### BOSWELL HALL GOINGS-ON

- 1) BADEV (Emergency Responders) Corn Roast - Sept. 4 at 5pm at the Conrad Residence (the driveway just south of Boswell Road.) Hot dogs, corn, beans, ice cream cones, raffles, door prize and music by the Marta Brothers. Come early and bring a chair.
- 2) FALL FOWL FEAST - Sept. 25 at 6pm at the Hall. Turkey and the trimmings, raffle basket and cash bar. Get your tickets at Destiny Bay Store starting Sept 13th.
- 3) Boswell Book Club resumes at the Hall on Sept. 9 at 1pm.
- 4) Boswell Ladies Club resumes at the Hall on Sept. 20 at 2pm.
- 5) Boswell Nifty Needlers Quilt Guild resumes on Sept. 20 at 2pm. For further information call Nancy Bowley 250-223-8046.
- 6) Boswell Vintners resumes meetings on Sept. 8 at 7pm. Contact Doreen Nault 250-227-9543.
- 7) Boswell Hikers: Sept. 1 - Mount Loki; Sept. 8 - Fry Creek; Sept. 15 - Roman Nose; Sept. 22 - Balancing Rock; Sept. 29 - East Side and upper Levels; Oct. 6 - Plaid Lake; Oct. 13 - Kokanee Springs and Wind up. For further information call Melody Farmer at 250-223-8443.
- 8) Carpet Bowling resumes in October. Contact Tom Sawyer 250-431-8404.
- 9) St. Anselm's Church Services with Rev. Robin Celiz on the 1st Sunday of the month at 1:30pm
- 10) Yoga with Lea continues on Thursdays at 9:30 - 11 am. Contact Merilyn Arms 250-223-8058.

### STRONG START

Strong Start Program Start Date September 13, 2010 Monday, 9:00am - East Shore Family Place - Crawford Bay. Ages 0-6. For more information contact: Simone Stanley @ 250-227-9218 extension 5504

### CRAFT FAIR VENDORS NOTICE

The Riondel Community Church will be hosting a Christmas craft fair in Riondel on November 20. Any vendors interested in participating can contact Sherlyne at 250-225-3597.

### THANK YOU

We would like to send a huge THANK YOU to the volunteers that put on the 90th Anniversary of the Harrison Memorial Church celebration. Your tireless efforts to keep this fantastic historic building in great shape have not gone unnoticed. We want to say Thank You for applying for various Grants and then seeing through all the projects completed over the past few years! With such a dedicated group of people, the future generations can appreciate a beautiful heritage building that all can enjoy. Thank You, Thank You, Thank You.  
**Mike and Ivy Jeffery**

### 99TH KOOTENAY LAKE FALL FAIR

Saturday, September 11th. Crawford Bay Hall 1 to 5pm. Afternoon Tea with live music by the Applesauce Fiddlers, 1 to 3pm. Bake Sale begins 1pm - Prizes 4:30pm. Auction of donated Fair items 5pm - prize-winning flowers, fruits, veggies, baking, and more! Proceeds go towards the 100th Fall Fair in 2011

### BIBLIOBUS

The Francophone Association's Traveling library (Bibliobus) will be in Gray Creek on Wednesday, September 15th at Yvon's place, 15154 Hwy 3A, from 5:30 to 8:00 P.M.(Pot Luck) Come borrow books, videos, cds, visits with friends, replenish your stash of maple sugar and syrup. Welcome everyone! *Le bibliobus sera à Gray Creek mercredi le 15 septembre 2010 de 17h30 à 20 heures, chez Yvon au 15154 HWY 3A. Venez participer au Pot Luck, emprunter des livres, vidéos, cds et faire le plein de sirop et de sucre d'érable. Bienvenue à tous!*

### GREEN BOATING SOCIETY

The new Kootenay Lake Green Boating Society is searching for interested volunteers to work in the capacity of directors on initial society set up. Directors will influence the mission statement, policies and goals. Initial funding has been offered through the Area A Economic Development Commission. Additional funds will be needed for website, informational brochures, etc. The initiative was influenced by a similar, long standing project in the Georgia Straight. This is your chance to effect the sustainable future of our entire lake including, but not limited to, public awareness of issues related to recreation, economical, and environmental. The Society may also evolve to be a representative to the newly formed regional Lake Stewardship group. If interested, please contact Lois Wakelin at 250-227-9367, or email to thelakeview@xplomet.com

### EAST SHORE FACES

#### Photos by Angelika Seed

For the past four years, Angelika Seed has taken her camera with her and shot (portrait) photos from many East Shore people at local events. Now she will display them in the Black Salt Cafe starting on Tuesday, September 14th for approximately a week. A cheese and cracker afternoon showing will start on Tuesday, September 14 at 5pm.

### SHHHHH.... SOMETHING'S HAPPENING

**The East Shore Mainstreet** is negotiating/brainstorming the creation of a sister web/blog site. If you're interested in contributing content to this project or have questions or ideas about the concept, please call Ingrid Baetzel at 250.227.9246 or Nevo Natan at 250.225.3421.

## KOOTENAY LAKE FERRY YEAR ROUND SCHEDULE

### Summer Schedule in effect

| Vessel Name | Balfour  | Terminal | Kootenay Bay | Terminal |
|-------------|----------|----------|--------------|----------|
|             | Summer   | Winter   | Summer       | Winter   |
| Osprey 2000 | 6:30 am  | 6:30 am  | 7:10 am      | 7:10 am  |
| Osprey 2000 | 8:10 am  | 8:10 am  | 9:00 am      | 9:00 am  |
| Osprey 2000 | 9:50 am  | 9:50 am  | 10:40 am     | 10:40 am |
| MV Balfour  | 10:40 am |          | 11:30 am     |          |
| Osprey 2000 | 11:30 am | 11:30 am | 12:20 pm     | 12:20 pm |
| MV Balfour  | 12:20 pm |          | 1:10 pm      |          |
| Osprey 2000 | 1:10 pm  | 1:10 pm  | 2:00 pm      | 2:00 pm  |
| MV Balfour  | 2:00 pm  |          | 2:50 pm      |          |
| Osprey 2000 | 2:50 pm  | 2:50 pm  | 3:40 pm      | 3:40 pm  |
| MV Balfour  | 3:40 pm  |          | 4:30 pm      |          |
| Osprey 2000 | 4:30 pm  | 4:30 pm  | 5:20 pm      | 5:20 pm  |
| MV Balfour  | 5:20 pm  |          | 6:10 pm      |          |
| Osprey 2000 | 6:10 pm  | 6:10 pm  | 7:00 pm      | 7:00 pm  |
| Osprey 2000 | 7:50 pm  | 7:50 pm  | 8:40 pm      | 8:40 pm  |
| Osprey 2000 | 9:40 pm  | 9:40 pm  | 10:20 pm     | 10:20 pm |

## CHURCH CALENDAR

### RIONDEL COMMUNITY CHURCH

#### September SCHEDULE

- Sept 5 - Brother Jeff Zak - Hope Alive, 1pm  
Music: Fiona and Wendy  
Sept 12 - Pastor Doug Middlebrook, KLCC, 3pm  
Music: Cheryl Middlebrook  
Sept 19 - Fr. John Ruder, Anglican, 3pm  
Music: The Woodwinds  
Sept 26 - Venerable Dirk Pidcock, Anglican, 11am  
Music - TBA

Please see website for changes: [www.riondel.ca](http://www.riondel.ca)  
Info at 250-225-3381

### CHRIST CHURCH & EAST SHORE CONGREGATIONS ST. ANSELM'S CHURCH BOSWELL (Anglican)

For information call Christ Church Creston 428-4248  
Sept 5 - 1:30 pm, Rev Robin Ruder Celiz  
Oct 3 - 1:30 pm, Rev Robin Ruder Celiz

### HARRISON MEMORIAL COMMUNITY CHURCH ANGLICAN

Crawford Creek Rd., Crawford Bay Everyone Welcome!

#### Church Schedule:

Church Services are held on the third Sunday of the month.  
Sept 19 - 1pm: Rev. Robin Ruder Celiz  
For information call Karen Gilbert: 227-8914  
or Sue Philp: 227- 9140  
email: [harrisonmemchurch@gmail.com](mailto:harrisonmemchurch@gmail.com)

### KOOTENAY LAKE COMMUNITY CHURCH

A Lighthouse on the East Shore  
Come & join us for a time of Praise, Worship & then the Word  
Sunday Service 10am -11:30am

**Youth Meetings (CBYG) weekly. Call for info.**  
Pastor Doug & Cheryl Middlebrook 250-227-9444/250-505-7659

### TEMPLE OF DIVINE LIGHT

Dedicated to all religions. Satsang each evening 8:00 pm.  
Everyone welcome - Yasodhara Ashram 227-9224

### MOST HOLY REDEEMER CATHOLIC CHURCH, RIONDEL

Rev. Francis de la Cruz  
Phone: 428-2300 Fax: 428-4811  
Sunday Mass at 2 pm

1st Sunday of the month, Fellowship Sunday.

### THE CHURCH OF JESUS CHRIST OF LATTER DAY SAINTS

1520 Campbell Avenue, Riondel, B.C.  
Meetings begin at 10 am, every Sunday. Info call, 250-227-9522

**Next Deadline: Sept 22**

## MEETING PLACES

**LIONS CLUB** - meets at the Kootenay Lake Community Church - 16190 Highway 3A, Crawford Bay.  
Meeting Times: 7 pm.  
Second and Fourth Tuesday of the Month  
For more information call Jim at 227-9622 or Ken at 227-9492.

**TOPS** - Take Off Pounds Sensibly: meets every Thursday morning at 8:30 am in the Kootenay Lake Community Church basement. Call Marilyn for more info: 227-9129

**THE RIONDEL AA GROUP** - meets every Tuesday at 8pm in the Community Center. Call 225-3355 for more information.

**PARENT ADVISORY COMMITTEE (PAC)** Meetings held at 7 pm at the Crawford Bay School library on the second Monday of the month. **SEPTEMBER Meeting: Sept 14, 2010.**  
Call Gina at 250.227.6896 to be put on the agenda...

SEPTEMBER 2010 *Mainstreet 19*

SEPTEMBER 2010

| SUNDAY  | MONDAY  | TUESDAY   | WEDNESDAY  | THURSDAY  | FRIDAY   | SATURDAY  |
|---|---|---|--|---|--|---|
|   |   |   | 1  | 2   | 3  | 4   |
|   |   |   | Dr. Moulson Lab 7:30-10:30   | Bottle Depot, 10-2  | Women's Soccer, CB Field, 5:30 pm  | Local's Night, Bocalino   |
| 5   | 6   | 7   | 8  | 9   | 10   | 11  |
| Sunday Market, CB Park<br>ESU Soccer, CB Field, 1pm<br>Bottle Depot, 10-2   |   | School Starts<br>Dr. Grymonpre  | Beg. Belly Dance Classes,<br>Tara Shanti, 7pm<br>Dr. Moulson Lab 7:30-10:30  | EASEY Mtng,<br>ES Fam Place, 2pm<br>Bottle Depot, 10-2<br>TOPS, KLCC bsmnt, 8:30am<br>Dr. Grymonpre | B. Salviulo Memorial<br>Fundraiser, Riondel BC<br>Women's Soccer,<br>CB Field, 5:30 pm | B. Salviulo Memorial<br>Fundraiser, Riondel BC<br>Fall Fair, CB Hall<br>Ted Wallace Art Sale,<br>714 Riondel Road |
| 12  | 13  | 14  | 15   | 16  | 17   | 18  |
| B. Salviulo Memorial<br>Fundraiser, Riondel BC<br>ESU Soccer, CB Field, 1pm<br>Bottle Depot, 10-2                       | PAC Meeting,<br>CBESS Library, 7pm<br>Strong Start Begins   | East Shore Faces,<br>Black Salt, 5pm<br>Lions Mtng, 7 pm<br>Dr. Grymonpre | Beg. Belly Dance Classes,<br>Tara Shanti, 7pm<br>Dr. Moulson Lab 7:30-10:30  | Bottle Depot, 10-2<br>TOPS, KLCC bsmnt, 8:30am<br>Dr. Grymonpre                                     | Dramatic Evening, CBESS<br>Women's Soccer,<br>CB Field, 5:30 pm                        |   |
| 19  | 20  | 21  | 22   | 23  | 24   | 25  |
| Spa Days, Sacred Journey<br>Sacred Gathering,<br>Timbuktu, 9:30-4:30<br>ESU Soccer, CB Field, 1pm<br>Bottle Depot, 10-2 | Spa Days, Sacred Journey<br>KLCC Meeting,<br>CB School, 7pm | Dr. Grymonpre   | Beg. Belly Dance Classes,<br>Tara Shanti, 7pm<br>Dr. Moulson, Lab 7:30-10:30 | Bottle Depot, 10-2<br>TOPS, KLCC bsmnt, 8:30am  | Women's Soccer,<br>CB Field, 5:30 pm   |   |
| 26  | 27  | 28  | 29   | 30  |  |   |
| ESU Soccer, CB Field, 1pm<br>Bottle Depot, 10-2   |   | Lions Mtng, 7 pm  | Beg. Belly Dance Classes,<br>Tara Shanti, 7pm<br>Dr. Moulson, Lab 7:30-10:30 |   |  |   |

# 99th Kootenay Lake Fall Fair

2010 THEME: "GO WILD!"



**Saturday, September 11, Crawford Bay Hall**  
 Exhibits entry Friday, 3pm to 7 pm  
**FAIR OPEN SATURDAY 1 TO 5**  
 Afternoon Tea 1 to 3 - Bake Sale starts 1 pm  
**APPLESAUCE FIDDLERS 1 TO 3**  
**PRIZES 4:30 AUCTION 5 PM**

**ES Health Centre 227-9006**  
**COUNSELLORS**  
 Drug & Alcohol: 353-7691  
 Child & Youth: 353-7691  
 Public Health Dental Screening/Counseling: 428-3876  
 Community Nursing: 227-9019 Hospice: 227-9006  
 Mammography Screening: 354-6721  
 Baby Clinics: 428-3873 Physiotherapy: 227-9155  
 Massage Therapy: 227-6877  
 For more on facility, call Kathy Smith, 227-9006

**Yoga w/ Lea:**  
**Mondays:** 8:45am, CBay Community Corner  
**Monday, Sept. 6:** LAST FREE SUMMER CLASS  
**Tuesdays:** 7pm, Tara Shanti  
**Thursdays:** 9:30am, Boswell Hall  
 \*Laughter Yoga group sessions available by booking through Lea.  
**(250)227-9030**  
**learae@telus.net**



| ADVERTISER                   | PAGE | ADVERTISER           | PAGE |
|------------------------------|------|----------------------|------|
| Angus McDonald               | 5    | Sacred Gathering     | 5,17 |
| Artisans                     | 14   | Sacred Journey       | 11   |
| ArtLink                      | 13   | SD#8 Back to School  | 4    |
| B-57 Excavating              | 11   | Sunnywoods Farm      | 11   |
| Betty Natan Photography      | 2    | Sunset Seed          | 8    |
| Black Salt                   | 15   | Ted Wallace Art Sale | 4    |
| Bocalino                     | 14   | The Green Machine    | 11   |
| Boswell Hall                 | 4    | Tile With Style      | 9    |
| Brandon S Memorial Fndraiser | 12   | Turlock Electrical   | 12   |
| Cedar Moon Spa               | 10   | Will Chapman         | 10   |
| Chamber of Commerce Election | 5,17 | Yoga with Lea        | 20   |
| Community Futures            | 16   |                      |      |
| Crawford Bay Hall & Parks    | 8    |                      |      |
| Crawford Bay Store           | 9    |                      |      |
| Credit Union                 | 11   |                      |      |
| Creston Valley Realty        | 10   |                      |      |
| Custom Timber Structures     | 11   |                      |      |
| Dan's Ground Disturbances    | 11   |                      |      |
| Dramatic Evening             | 10   |                      |      |
| ESIS                         | 1    |                      |      |
| East Side Mojo's             | 7    |                      |      |
| Eastshore Physiotherapy      | 7    |                      |      |
| Fall Fair                    | 20   |                      |      |
| Fitness Place                | 15   |                      |      |
| Gray Creek Store             | 18   |                      |      |
| G.R.S. Contracting           | 10   |                      |      |
| Harreson Tanner              | 7    |                      |      |
| Harrop-Procter Forest Prods  | 12   |                      |      |
| Hulland and Larsen           | 11   |                      |      |
| Kootenay Insurance Services  | 14   |                      |      |
| Kootenay Lake Rock and Soil  | 8    |                      |      |
| Kootenay Springs Softub      | 14   |                      |      |
| Lakeview                     | 1    |                      |      |
| Lattaco (Mr. Moo)            | 2,11 |                      |      |
| New-2-U                      | 10   |                      |      |
| On the Mark Flooring         | 9,11 |                      |      |
| Playground Thanks            | 5    |                      |      |
| RDCK EDC                     | 17   |                      |      |
| RDCK Rec 9 Grant Apps        | 14   |                      |      |
| RDCK Transfer Station Hours  | 10   |                      |      |
| Riondel Market               | 11   |                      |      |
| Rockwood                     | 12   |                      |      |

**Transfer Station Hours**  
**Crawford Bay:**  
 Sun, Tues & Thurs:  
 9 am - 3 pm  
**Boswell:**  
 Weds/Sat, 12-4

**Library Hours:**  
**ES Reading Centre:**  
 Tues & Sat: 12-3  
 Thurs: 7-9 pm  
**Riondel Library:**  
 Weds: 6-8 pm  
 Tues & Thurs:  
 10am-12pm  
 Sat: 10:30am - 12:30pm